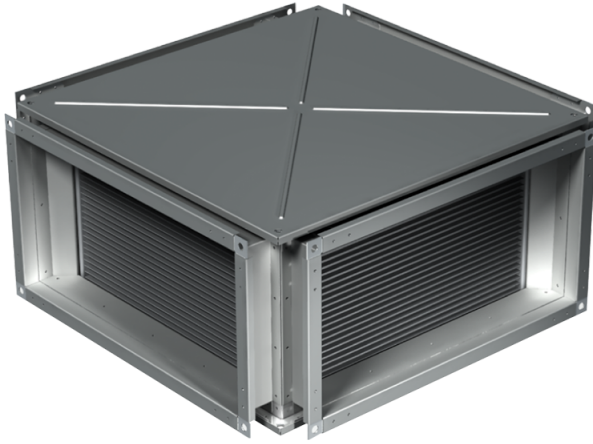


PR 600x300

Plate heat exchanger with X-shaped air passage designed for exhaust air heat recovery in conditioning and ventilating systems

- Casing material: Galvanized steel



	Unit of measurement	PR 600x300
Weight	kg	31

Dimensions

B	B1	B2	H	H1	H2	H3	L
600	620	640	300	320	340	375	730

