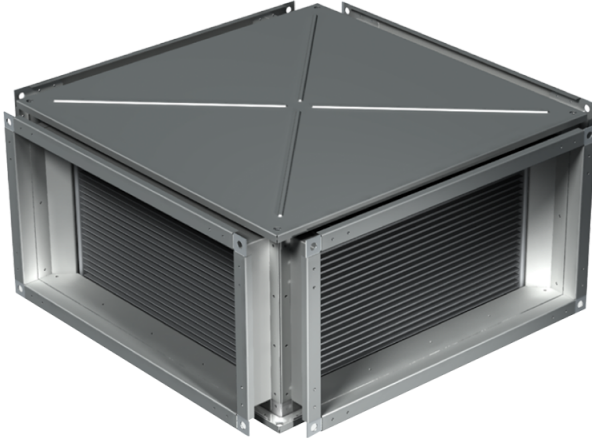


# PR 600x350

Plate heat exchanger with X-shaped air passage designed for exhaust air heat recovery in conditioning and ventilating systems

- Casing material: Galvanized steel



	Unit of measurement	PR 600x350
Weight	kg	33.4

## Dimensions

B	B1	B2	H	H1	H2	H3	L
600	620	640	350	370	390	425	730

