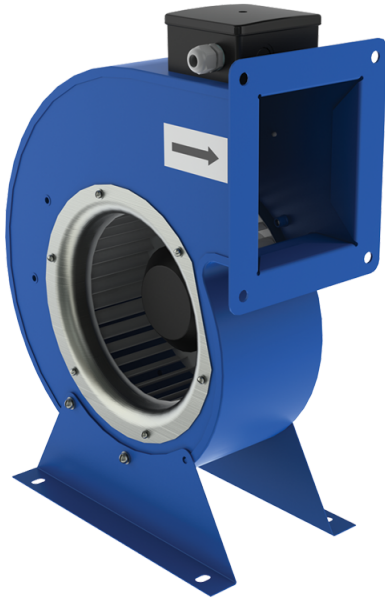


VCU 4E 225x102



Scroll-type single-inlet centrifugal fans powered by external rotor motor

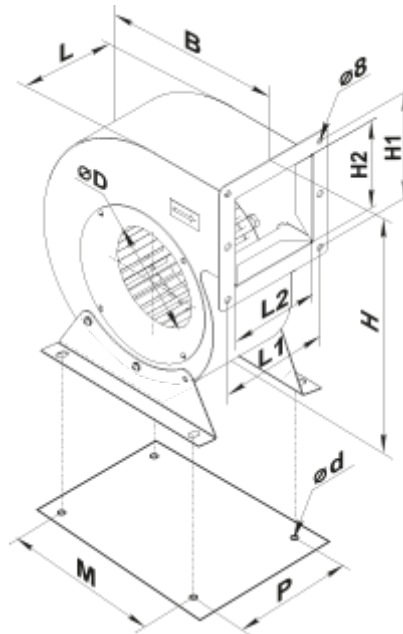
- Maximum airflow: 1480
- Sound pressure level LpA at 3 m: 69
- Motor type: AC
- Impeller type: Centrifugal forward curved blades
- Casing material: Coated steel

	Unit of measurement	VCU 4E 225x102
Speed	-	1
Minimum supply voltage	V	230
Maximum supply voltage	V	230
Power supply frequency	Hz	50
Rated power	W	395
Unit current	A	1.98
Maximum airflow	m ³ /h	1480
Sound pressure level LpA at 3 m	dB(A)	69
Weight	kg	11.9
Transported air temperature (max)	°C	70
Transported air temperature (min)	°C	-40
Ingress protection rating	-	IPX4
Ingress protection rating of the drive	-	IP44
Unit category	-	NRVU
Type of drive installed	-	External MSD or VSD
Type of heat recovery system	-	None
Nominal flow rate	m ³ /s	0.231
Nominal external pressure	Pa	270
Maximum external leakage rates	%	2.7
Static efficiency	%	23.1
Declared typology	-	NRVU UVU

Sound power level	dB(A)	89
Effective electric power input	kW	0.275






Dimensions

ØD	B	H	H1	H2	L	L1	L2	P	M	d
225	365	441	210	171	145	170	137	178	250	11




Accessories

Speed controllers

Name	Photo	Description
RS-2 N		Speed controller
RS-2 V		Speed controller
RS-2,5 N		Speed controller
RS-2,5 V		Speed controller
RS-2,5-PS		Used in ventilation systems for switching on/off and speed control of single-phase fan motors with voltage control

RS-4.0-PS		Used in ventilation systems for switching on/off and speed control of single-phase fan motors with voltage control
RS-3.0-T		Applied in ventilation systems for speed switching ON/OFF and speed control of single-phase power-controlled motors
RS-5.0-T		Applied in ventilation systems for speed switching ON/OFF and speed control of single-phase power-controlled motors
RS-10.0-T		Applied in ventilation systems for speed switching ON/OFF and speed control of single-phase power-controlled motors
RS-3.0-TA		Applied in ventilation systems for switching ON/OFF and speed controlling of single-phase power-controlled motors
RS-5.0-TA		Applied in ventilation systems for switching ON/OFF and speed controlling of single-phase power-controlled motors
RS-10.0-TA		Applied in ventilation systems for switching ON/OFF and speed controlling of single-phase power-controlled motors
RSA5E-2-P		Speed control enables not only selecting the comfortable ventilation mode for the periodically visited premises but reducing the energy consumption for the ventilation
RSA5E-2-M		Speed controls enables not only selecting the comfortable ventilation mode for the periodically visited premises but reducing the energy consumption for the ventilation
RSA5E-3-M		Speed controls enables not only selecting the comfortable ventilation mode for the periodically visited premises but reducing the energy consumption for the ventilation
RSA5E-4-M		Speed controls enables not only selecting the comfortable ventilation mode for the periodically visited premises but reducing the energy consumption for the ventilation
RSA5E-3.5-T		Speed controllers are applied for air flow control of single phase fans by means of motor step speed control
RSA5E-5.0-T		Speed controllers are applied for air flow control of single phase fans by means of motor step speed control

Temperature regulators

Name	Photo	Description
RT-10		Temperature regulator