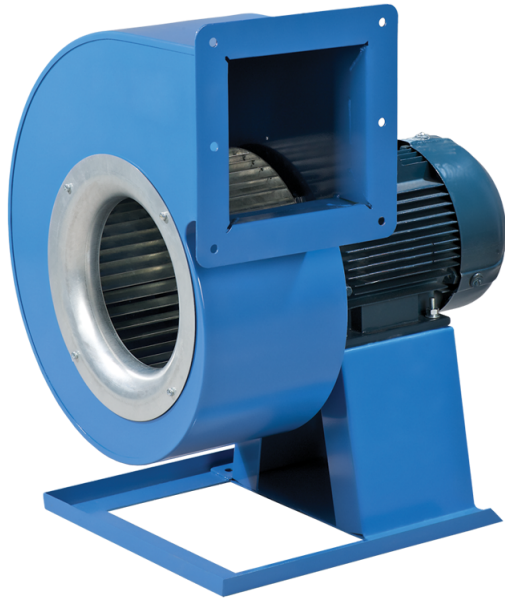


VCUN 180x74-1,1-2 R90



Scroll single-inlet centrifugal fans with the impeller mounted directly on the three phase asynchronous motor shaft. The fan is designed for supply and exhaust ventilation systems

- Maximum airflow: 1950
- Sound pressure level LpA at 3 m: 70
- Motor type: AC
- Impeller type: Centrifugal forward curved blades
- Casing material: Coated steel

	Unit of measurement	VCUN 180x74-1,1-2 R90
Speed	-	1
Minimum supply voltage	V	400
Maximum supply voltage	V	400
Power supply frequency	Hz	50
Rated power	W	1100
Unit current	A	2.6
Maximum airflow	m ³ /h	1950
Sound pressure level LpA at 3 m	dB(A)	70
Weight	kg	14.5
Transported air temperature (max)	°C	60
Ingress protection rating	-	IP54
Ingress protection rating of the drive	-	IP54






Dimensions

ØD	Ød	Ød1	B	H	H1	H2	H3	L	L1	L2	P	M	I	G	K	S
180	10	10	311	414	143	120	193	365	143	114	146	270	270	22	314	90



Accessories

Speed controllers

Name	Photo	Description
RSA5D-12,0-M		Three phase speed controller
RSA5D-11,0-M		Three phase speed controller
RSA5D-8,0-M		Three phase speed controller
RSA5D-6,0-M		Three phase speed controller
RSA5D-3,5-T		Three phase speed controller