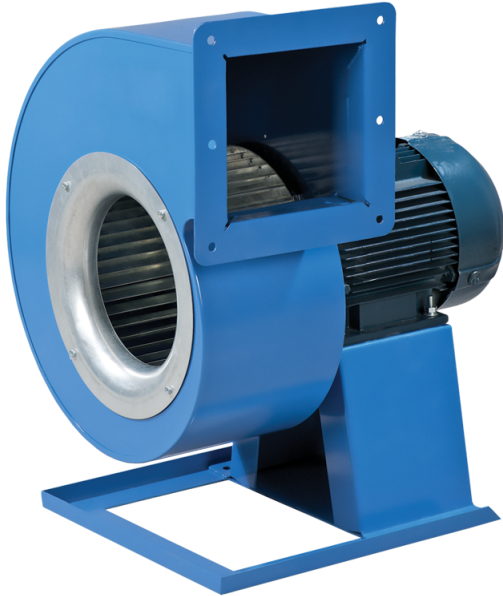


# VCUN 240x114-2,2-4 R90



Scroll single-inlet centrifugal fans with the impeller mounted directly on the three phase asynchronous motor shaft. The fan is designed for supply and exhaust ventilation systems

- Maximum airflow: 2930
- Sound pressure level LpA at 3 m: 74
- Motor type: AC
- Impeller type: Centrifugal forward curved blades
- Casing material: Polypropylene/Thermoplastic elastomer

	Unit of measurement	VCUN 240x114-2,2-4 R90
Speed	-	1
Minimum supply voltage	V	400
Maximum supply voltage	V	400
Power supply frequency	Hz	50
Rated power	W	2200
Unit current	A	5.1
Maximum airflow	m <sup>3</sup> /h	2930
Sound pressure level LpA at 3 m	dB(A)	74
Weight	kg	30.5
Transported air temperature (max)	°C	60
Ingress protection rating	-	IP54
Ingress protection rating of the drive	-	IP54

## Dimensions

ØD	Ød	Ød1	B	H	H1	H2	H3	L	L1	L2	P	M	I	G	K	S
240	10	12	414	568	186	161	282	461	186	156	195	275	362	27	330	125



## Accessories

### Speed controllers

Name	Photo	Description
<a href="#">RSA5D-8,0-M</a>		Three phase speed controller
<a href="#">RSA5D-11,0-M</a>		Three phase speed controller
<a href="#">RSA5D-12,0-M</a>		Three phase speed controller