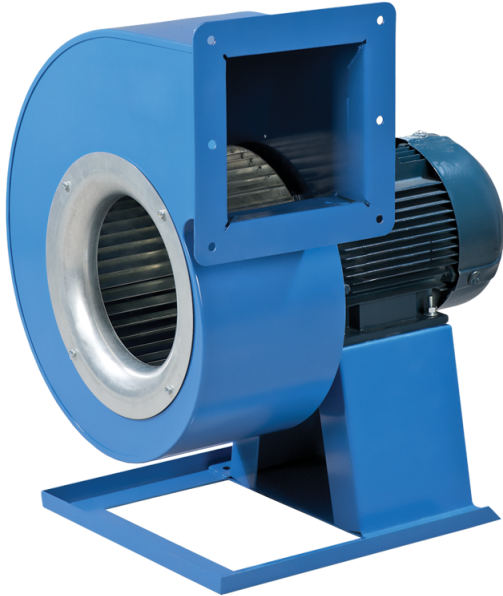


VCUN 280x127-5,5-2 R90

Scroll single-inlet centrifugal fans with the impeller mounted directly on the three phase asynchronous motor shaft. The fan is designed for supply and exhaust ventilation systems

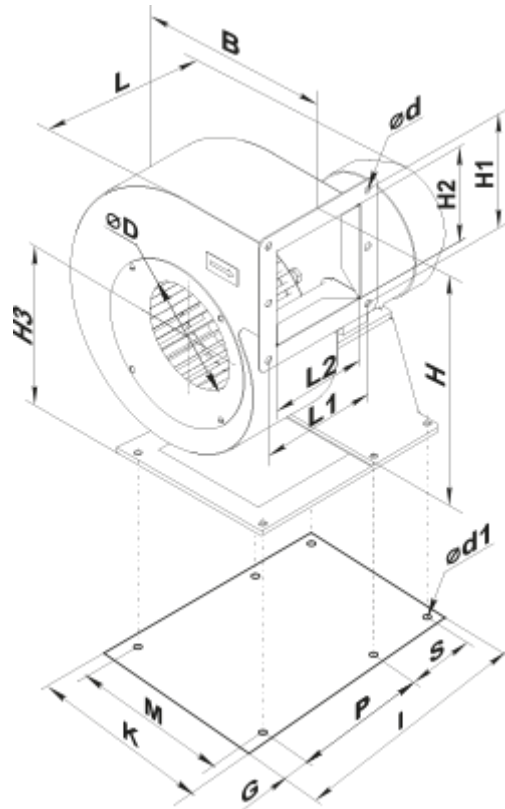
- Maximum airflow: 6330
- Sound pressure level LpA at 3 m: 81
- Motor type: AC
- Impeller type: Centrifugal forward curved blades
- Casing material: Polypropylene/Thermoplastic elastomer



	Unit of measurement	VCUN 280x127-5,5-2 R90
Speed	-	1
Minimum supply voltage	V	400
Maximum supply voltage	V	400
Power supply frequency	Hz	50
Rated power	W	5500
Unit current	A	10.7
Maximum airflow	m ³ /h	6330
Sound pressure level LpA at 3 m	dB(A)	81
Weight	kg	42.4
Transported air temperature (max)	°C	60
Ingress protection rating	-	IP54
Ingress protection rating of the drive	-	IP54

Dimensions

ØD	Ød	Ød1	B	H	H1	H2	H3	L	L1	L2	P	M	I	G	K	S
280	10	12	483	646	225	189	312	545	231	196	243	300	427	27	355	140



Accessories

Speed controllers

Name	Photo	Description
RSA5D-12.0-M		Three phase speed controller