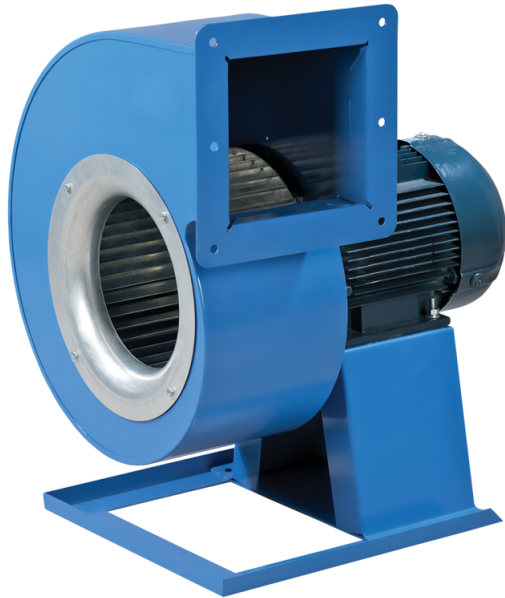


VCUN 400x183-5,5-4 R90



Scroll single-inlet centrifugal fans with the impeller mounted directly on the three phase asynchronous motor shaft. The fan is designed for supply and exhaust ventilation systems

- Maximum airflow: 10175
- Sound pressure level LpA at 3 m: 80
- Motor type: AC
- Impeller type: Centrifugal forward curved blades
- Casing material: Polypropylene/Thermoplastic elastomer

	Unit of measurement	VCUN 400x183-5,5-4 R90
Speed	-	1
Minimum supply voltage	V	400
Maximum supply voltage	V	400
Power supply frequency	Hz	50
Rated power	W	5500
Unit current	A	11
Maximum airflow	m ³ /h	10175
Sound pressure level LpA at 3 m	dB(A)	80
Weight	kg	69.5
Transported air temperature (max)	°C	60
Ingress protection rating	-	IP54
Ingress protection rating of the drive	-	IP54


Dimensions

ØD	Ød	Ød1	B	H	H1	H2	H3	L	L1	L2	P	M	I	G	K	S
400	10	15	689	882	310	272	414	662	330	289	341	400	525	27	455	140



Accessories

Speed controllers

Name	Photo	Description
RSA5D-12.0-M		Three phase speed controller