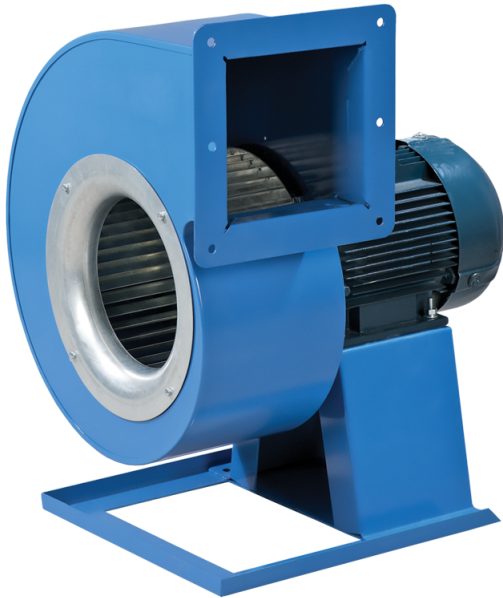


VCUN 450x203-4,0-6 R90

Scroll single-inlet centrifugal fans with the impeller mounted directly on the three phase asynchronous motor shaft. The fan is designed for supply and exhaust ventilation systems

- Maximum airflow: 11150
- Sound pressure level LpA at 3 m: 76
- Motor type: AC
- Impeller type: Centrifugal forward curved blades
- Casing material: Coated steel



| | Unit of measurement | VCUN 450x203-4,0-6 R90 |
|----------------------------------------|---------------------|------------------------|
| Speed | - | 1 |
| Minimum supply voltage | V | 400 |
| Maximum supply voltage | V | 400 |
| Power supply frequency | Hz | 50 |
| Rated power | W | 4000 |
| Unit current | A | 9.1 |
| Maximum airflow | m ³ /h | 11150 |
| Sound pressure level LpA at 3 m | dB(A) | 76 |
| Weight | kg | 76.5 |
| Transported air temperature (max) | °C | 60 |
| Ingress protection rating | - | IP54 |
| Ingress protection rating of the drive | - | IP54 |

Dimensions

| ØD | Ød | Ød1 | B | H | H1 | H2 | H3 | L | L1 | L2 | P | M | I | G | K | S |
|-----|----|-----|-----|-----|-----|-----|-----|-----|-----|-----|-----|-----|-----|----|-----|-----|
| 450 | 10 | 15 | 774 | 985 | 345 | 306 | 464 | 690 | 352 | 315 | 351 | 450 | 550 | 42 | 530 | 140 |



Accessories

Speed controllers

| Name | Photo | Description |
|------------------------------|-------------------------------------------------------------------------------------|------------------------------|
| RSA5D-11,0-M |  | Three phase speed controller |
| RSA5D-12,0-M |  | Three phase speed controller |