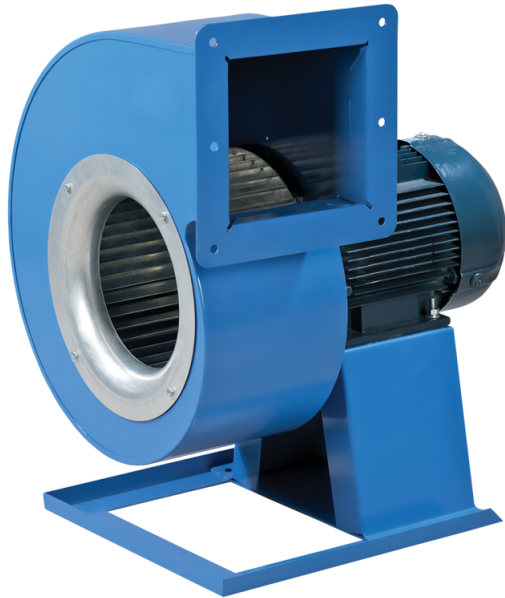


VCUN 500x229-11,0-4 R90



Scroll single-inlet centrifugal fans with the impeller mounted directly on the three phase asynchronous motor shaft. The fan is designed for supply and exhaust ventilation systems

- Maximum airflow: 17250
- Sound pressure level LpA at 3 m: 85
- Motor type: AC
- Impeller type: Centrifugal forward curved blades
- Casing material: Polypropylene/Thermoplastic elastomer

	Unit of measurement	VCUN 500x229-11,0-4 R90
Speed	-	1
Minimum supply voltage	V	400
Maximum supply voltage	V	400
Power supply frequency	Hz	50
Rated power	W	11000
Unit current	A	24
Maximum airflow	m ³ /h	17250
Sound pressure level LpA at 3 m	dB(A)	85
Weight	kg	107
Transported air temperature (max)	°C	60
Ingress protection rating	-	IP54
Ingress protection rating of the drive	-	IP54

Dimensions

ØD	Ød	Ød1	B	H	H1	H2	H3	L	L1	L2	P	M	I	G	K	S
500	11	15	860	1115	390	341	534	761	401	353	408	500	645	42	580	178

