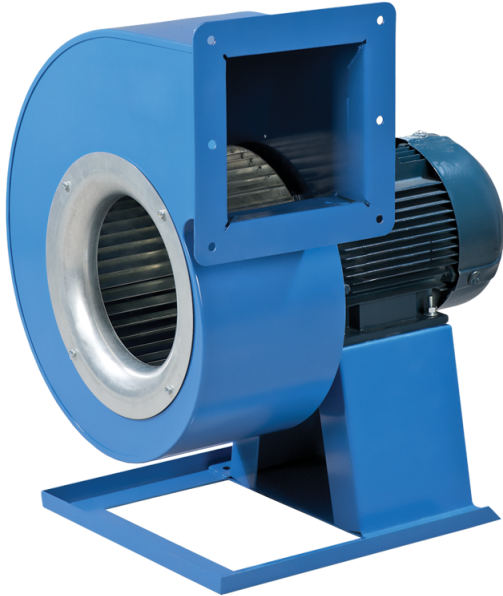


# VCUN 500x229-7,5-6 R90

Scroll single-inlet centrifugal fans with the impeller mounted directly on the three phase asynchronous motor shaft. The fan is designed for supply and exhaust ventilation systems

- Maximum airflow: 14960
- Sound pressure level LpA at 3 m: 78
- Motor type: AC
- Impeller type: Centrifugal forward curved blades
- Casing material: Polypropylene/Thermoplastic elastomer



	Unit of measurement	VCUN 500x229-7,5-6 R90
Speed	-	1
Minimum supply voltage	V	400
Maximum supply voltage	V	400
Power supply frequency	Hz	50
Rated power	W	7500
Unit current	A	17
Maximum airflow	m <sup>3</sup> /h	14960
Sound pressure level LpA at 3 m	dB(A)	78
Weight	kg	86
Transported air temperature (max)	°C	60
Ingress protection rating	-	IP54
Ingress protection rating of the drive	-	IP54

## Dimensions

ØD	Ød	Ød1	B	H	H1	H2	H3	L	L1	L2	P	M	I	G	K	S
500	11	15	860	1115	390	341	534	761	401	353	408	500	645	42	580	178

