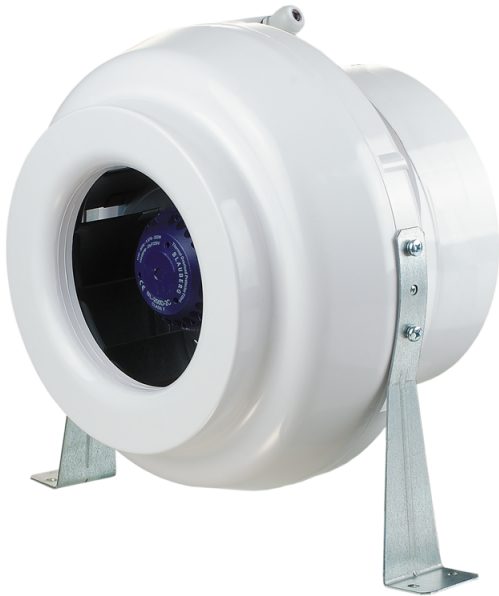


VK 250 Duo



Inline centrifugal fans in plastic casing

- Maximum airflow: 1126
- Sound pressure level LpA at 3 m: 46
- Motor type: AC
- Impeller type: Centrifugal backward curved blades
- Casing material: Plastic
- Installation in any position

	Unit of measurement	VK 250 Duo	
Connected air duct size	mm	250	
Speed	-	2	
Minimum supply voltage	V	230	
Maximum supply voltage	V	230	
Power supply frequency	Hz	50	
Rated power	W	147	176
Unit current	A	0.66	0.76
Maximum airflow	m ³ /h	642	1126
Sound pressure level LpA at 3 m	dB(A)	37	46
Weight	kg	4.3	
Transported air temperature (max)	°C	55	
Transported air temperature (min)	°C	-25	
Ingress protection rating	-	IPX4	
ErP compliance	-	2016, 2018	
Cold - Specific energy consumption (SEC)	kWh/(m ² /a)	51	
SEC Class Cold	-	A+	
Average - Specific energy consumption (SEC)	kWh/(m ² /a)	24	
SEC Class Average	-	C	
Warm - Specific energy consumption (SEC)	kWh/(m ² /a)	8.5	
SEC Class Warm	-	F	
Unit category	-	RVU	

Type of ventilation unit	-	Unidirectional
Type of drive installed	-	2-speed
Type of heat recovery system	-	None
Maximum flow rate	m ³ /h	955
Electric power input	W	168.2
Reference flow rate	m ³ /s	0.186
Reference pressure difference	Pa	50
Specific power input (SPI)	W/(m ³ /h)	0.232
Control typology	-	Local demand control
Maximum external leakage rates	%	2.7
Cold - The annual electricity consumption (AEC)	kWh/a	174
Average - The annual electricity consumption (AEC)	kWh/a	174
Warm - Jährlicher Stromverbrauch (JSV)	kWh/a	174
Cold - The annual heating saved (AHS)	kWh/a	5536
The annual heating saved (AHS) Average	kWh/a	2830
The annual heating saved (AHS) Warm	kWh/a	1280
Declared typology	-	RVU UVU
Sound power level	dB(A)	66

Dimensions

ØD	ØD1	B	L	L1	L2	L3
250	340	354	265	30	30	40

