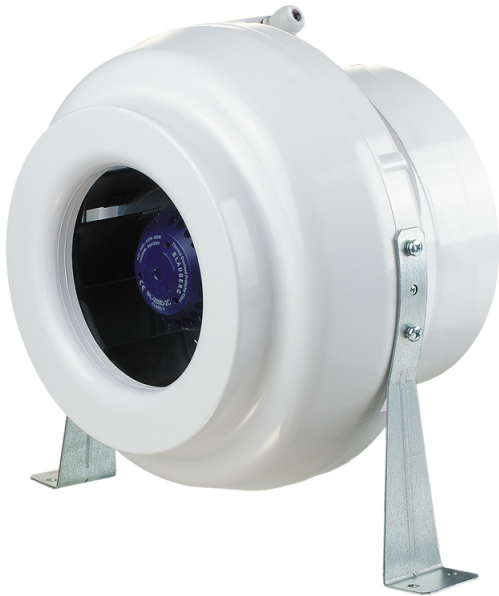


VK 250 Duo R1V



Inline centrifugal fans in plastic casing

- Maximum airflow: 1126
- Sound pressure level LpA at 3 m: 46
- Motor type: AC
- Control: Built-in speed controller
- Impeller type: Centrifugal backward curved blades
- Casing material: Plastic
- Installation in any position
- Cable with mains plug

	Unit of measurement	VK 250 Duo R1V	
Connected air duct size	mm	250	
Speed	-	2	
Minimum supply voltage	V	230	
Maximum supply voltage	V	230	
Power supply frequency	Hz	50	
Rated power	W	147	176
Unit current	A	0.66	0.76
Maximum airflow	m ³ /h	642	1126
Sound pressure level LpA at 3 m	dB(A)	37	46
Weight	kg	4.3	
Transported air temperature (max)	°C	55	
Transported air temperature (min)	°C	-25	
Ingress protection rating	-	IPX4	

Dimensions

ØD	ØD1	B	L	L1	L2	L3
250	340	354	265	30	30	40

