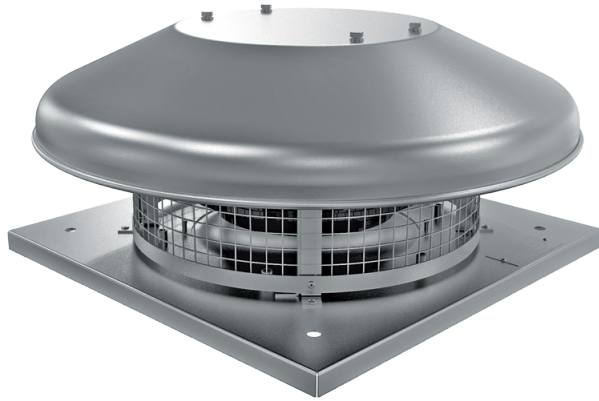


VKHC 250 EC

Roof exhaust centrifugal fans with horizontal air exhaust

- Maximum airflow: 1500
- Sound pressure level LpA at 3 m: 54
- Motor type: EC
- Impeller type: Centrifugal backward curved blades
- Casing material: Coated steel



| | Unit of measurement | VKHC 250 EC |
|--|---------------------|-------------|
| Speed | - | 1 |
| Phases | - | 1 |
| Minimum supply voltage | V | 230 |
| Maximum supply voltage | V | 230 |
| Power supply frequency | Hz | 50/60 |
| Rated power | W | 164 |
| Unit current | A | 1.25 |
| Maximum airflow | m ³ /h | 1500 |
| Sound pressure level LpA at 3 m | dB(A) | 54 |
| Weight | kg | 8 |
| Transported air temperature (max) | °C | 60 |
| Transported air temperature (min) | °C | -25 |
| Ingress protection rating | - | IPX4 |
| Ingress protection rating of the drive | - | IP55 |


Dimensions

| H | ØD | ØD1 | L | L1 |
|-----|-----|-----|-----|-----|
| 224 | 503 | 285 | 420 | 330 |









Accessories


Speed controllers

| Name | Photo | Description |
|-------------------------|---|--------------------------------|
| R-1/010 |  | Speed controller for EC motors |

For round ducts

| Name | Photo | Description |
|------------------------------|---|---|
| SR 250/600 |  | Silencer is applied for noise absorption produced during the ventilating equipment operation and spread along the ducting systems |
| SR 250/900 |  | Silencer is applied for noise absorption produced during the ventilating equipment operation and spread along the ducting systems |
| SR 250/1200 |  | Silencer is applied for noise absorption produced during the ventilating equipment operation and spread along the ducting systems |
| SRF 250/600 |  | Silencer is applied for noise absorption produced during the ventilating equipment operation and spread along the ducting systems |
| SRF 250/900 |  | Silencer is applied for noise absorption produced during the ventilating equipment operation and spread along the ducting systems |
| SRF 250/2000 |  | Silencer is applied for noise absorption produced during the ventilating equipment operation and spread along the ducting systems |

For round ducts

| Name | Photo | Description |
|-------------------------|---|--|
| KOM 250 |  | Spring-loaded backdraft damper for round ducts |

[KOMu 250](#)



Spring-loaded backdraft damper for round ducts

Ecodesign

| | |
|---------------------------------------|----------------|
| Trademark | Vents |
| Model | VKHC 250 EC |
| Type of drive installed | Integrated VSD |
| Type of heat recovery system | None |
| Nominal flow rate (m ³ /s) | 0.248 |
| Nominal external pressure (Pa) | 336 |
| Maximum external leakage rates (%) | 2.7 |
| Static efficiency (%) | 60.1 |
| Effective electric power input (kW) | 0.162 |
| Sound power level (dB(A)) | 67 |
| Declared typology | NRVU UVU |