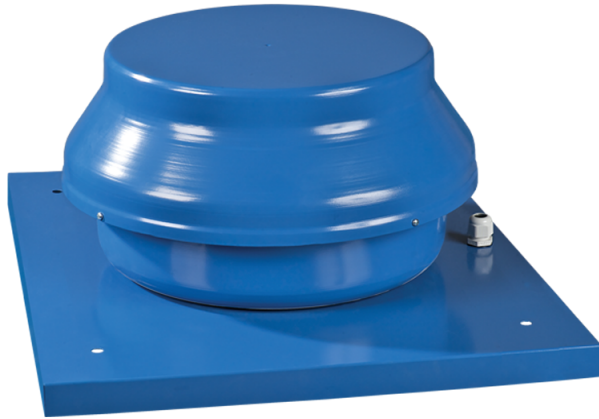


# VKMK 200



Centrifugal roof fans in the steel casing with the horizontal exhaust of air

- Maximum airflow: 950
- Sound pressure level LpA at 3 m: 48
- Motor type: AC
- Impeller type: Centrifugal backward curved blades
- Casing material: Coated steel

	Unit of measurement	VKMK 200
Connected air duct size	mm	200
Speed	-	1
Minimum supply voltage	V	220
Maximum supply voltage	V	240
Power supply frequency	Hz	50/60
Rated power	W	154
Unit current	A	0.67
Maximum airflow	m <sup>3</sup> /h	950
Sound pressure level LpA at 3 m	dB(A)	48
Weight	kg	8.1
Transported air temperature (max)	°C	50
Transported air temperature (min)	°C	-25
Ingress protection rating	-	IPX4
Ingress protection rating of the drive	-	IP44
ErP compliance	-	2016, 2018
Cold - Specific energy consumption (SEC)	kWh/(m <sup>2</sup> /a)	53.5
SEC Class Cold	-	A+
Average - Specific energy consumption (SEC)	kWh/(m <sup>2</sup> /a)	26.5
SEC Class Average	-	B
Warm - Specific energy consumption (SEC)	kWh/(m <sup>2</sup> /a)	11
SEC Class Warm	-	E

Unit category	-	RVU
Type of ventilation unit	-	Unidirectional
Type of drive installed	-	Variable speed
Type of heat recovery system	-	None
Maximum flow rate	m <sup>3</sup> /h	870
Electric power input	W	154
Reference flow rate	m <sup>3</sup> /s	0.169
Reference pressure difference	Pa	50
Specific power input (SPI)	W/(m <sup>3</sup> /h)	0.139
Control typology	-	Local demand control
Maximum external leakage rates	%	2.7
Cold - The annual electricity consumption (AEC)	kWh/a	74
Average - The annual electricity consumption (AEC)	kWh/a	74
Warm - Jährlicher Stromverbrauch (JSV)	kWh/a	74
Cold - The annual heating saved (AHS)	kWh/a	5536
The annual heating saved (AHS) Average	kWh/a	2830
The annual heating saved (AHS) Warm	kWh/a	1280
Declared typology	-	RVU UVU
Sound power level	dB(A)	48

## Dimensions

ØD	ØD1	H	L	L1
198	400	250	440	330

