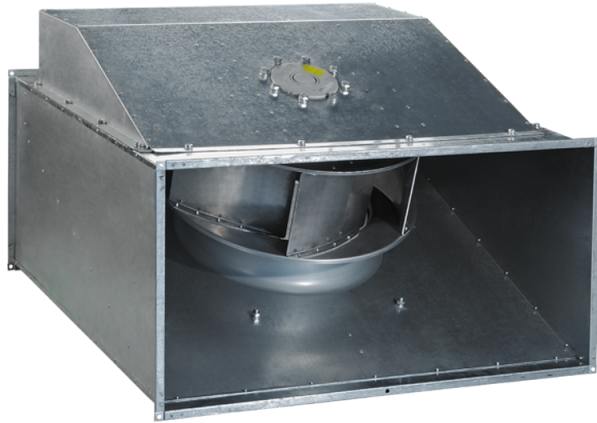


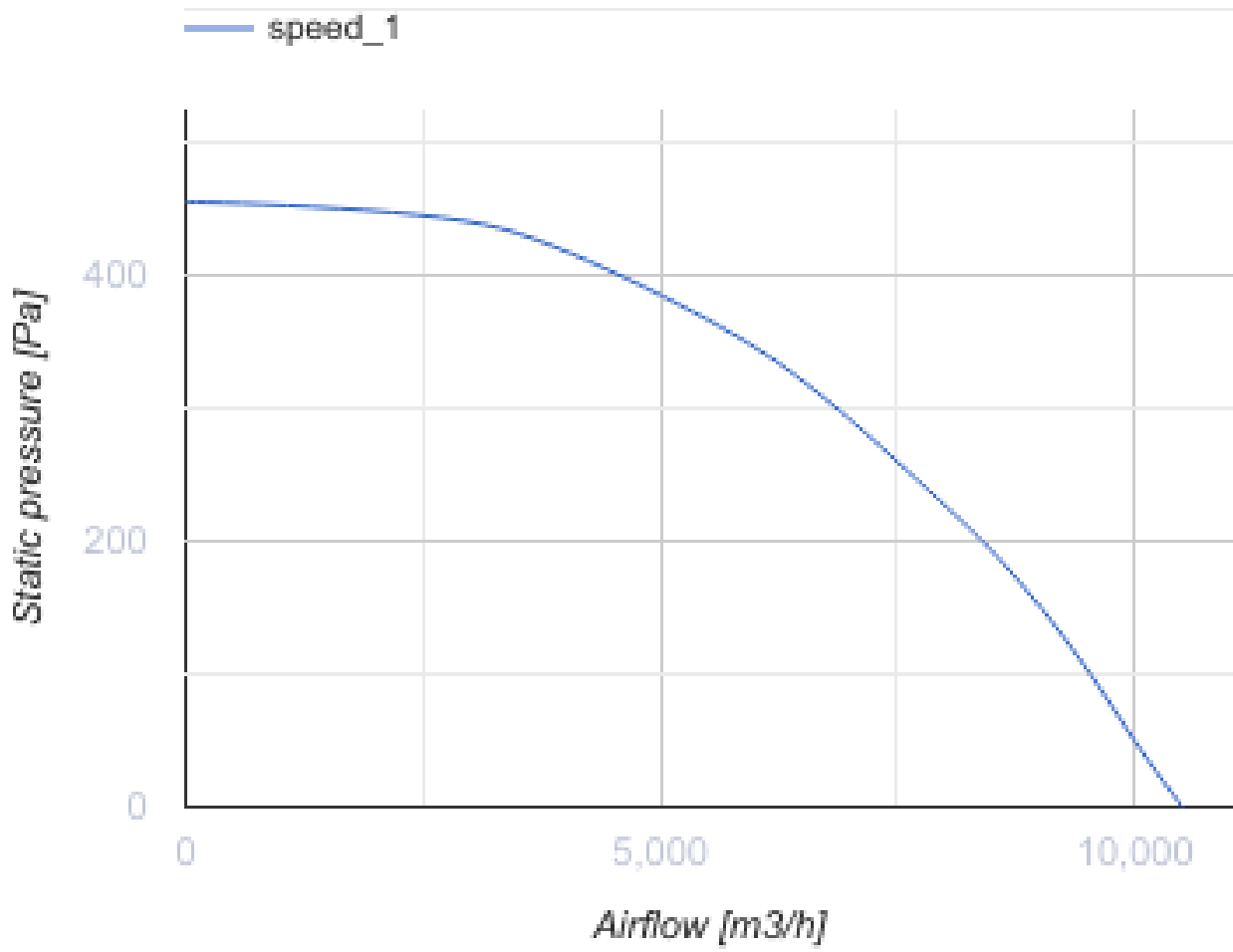
VKP 6D 1000x500

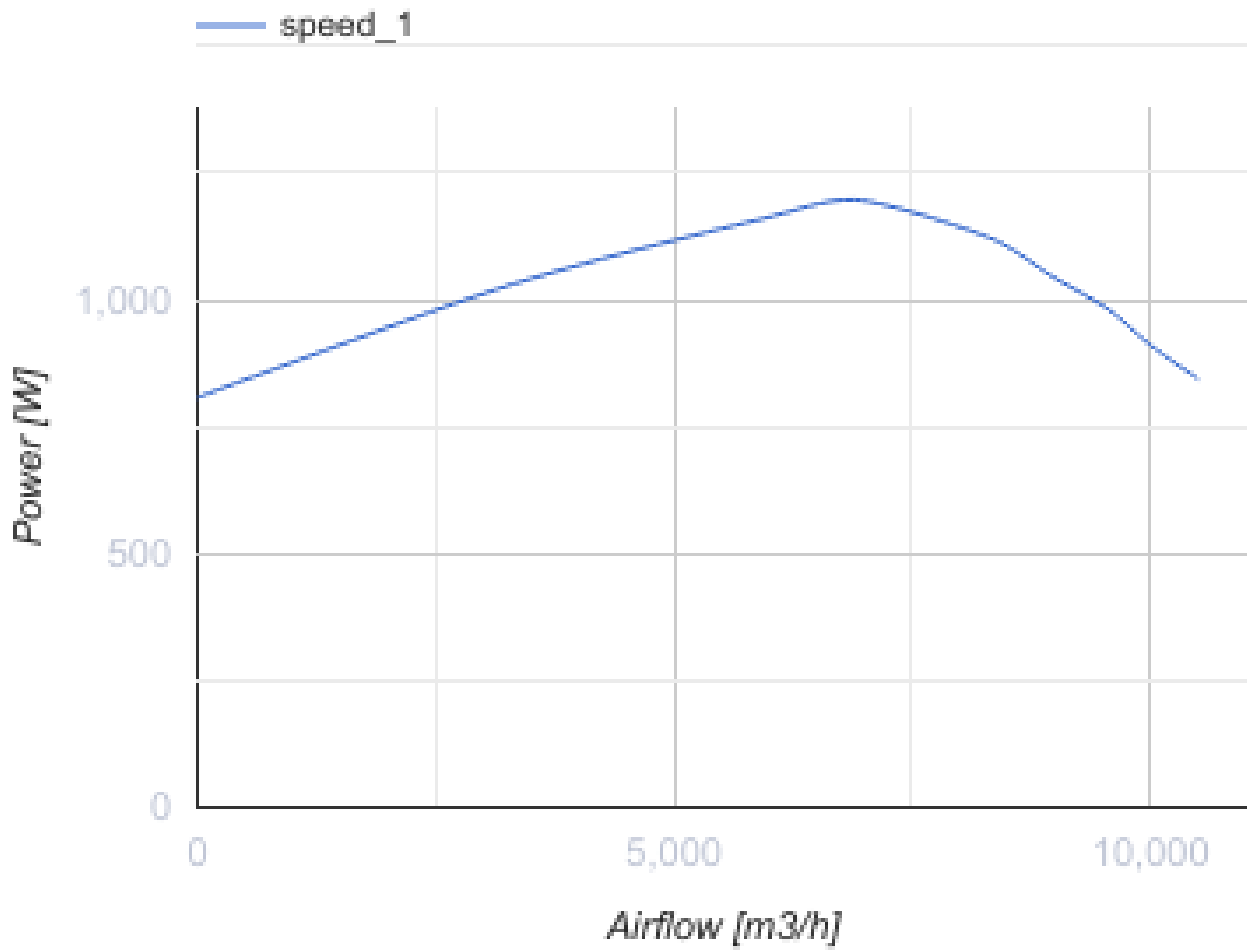


Centrifugal fans for rectangular ducts

- Maximum airflow: 10500
- Sound pressure level LpA at 3 m: 69
- Motor type: AC
- Impeller type: Centrifugal backward curved blades
- Casing material: Galvanized steel
- Installation in any position

	Unit of measurement	VKP 6D 1000x500
Connected air duct size	mm	1000x500
Minimum supply voltage	V	400
Maximum supply voltage	V	400
Power supply frequency	Hz	50
Rated power	W	1198
Unit current	A	2.7
Maximum airflow	m ³ /h	10500
Sound pressure level LpA at 3 m	dB(A)	69
Weight	kg	120
Transported air temperature (max)	°C	50
Transported air temperature (min)	°C	-25
Ingress protection rating	-	IPX4
Ingress protection rating of the drive	-	IP44





Dimensions

B	B1	B2	H	H1	H2	H3	L
1000	1020	1040	500	520	540	720	1150

