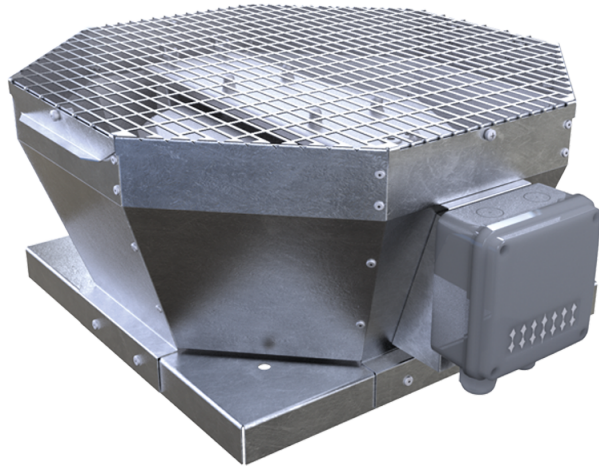


VKVz 400 EC



Roof exhaust centrifugal fans with vertical air exhaust

- Maximum airflow: 5380
- Sound pressure level LpA at 3 m: 58
- Motor type: EC
- Impeller type: Centrifugal backward curved blades
- Casing material: Galvanized steel

	Unit of measurement	VKVz 400 EC
Speed	-	1
Minimum supply voltage	V	230
Maximum supply voltage	V	230
Power supply frequency	Hz	50/60
Rated power	W	526
Unit current	A	3.9
Maximum airflow	m ³ /h	5380
Sound pressure level LpA at 3 m	dB(A)	58
Weight	kg	27
Transported air temperature (max)	°C	50
Transported air temperature (min)	°C	-25
Ingress protection rating	-	IPX4
Ingress protection rating of the drive	-	IP54
ErP compliance	-	2016, 2018
Unit category	-	NRVU
Type of drive installed	-	Integrated VSD
Type of heat recovery system	-	None
Nominal flow rate	m ³ /s	0.886
Nominal external pressure	Pa	341
Maximum external leakage rates	%	2.7
Static efficiency	%	65.8

Declared typology	-	NRVU UVU
Sound power level	dB(A)	78
Effective electric power input	kW	0.519

Dimensions

A	B	C
738	598	371

