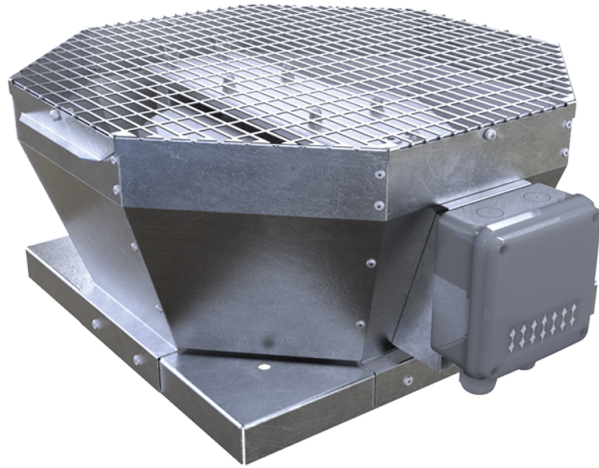


# VKVz 400 EC

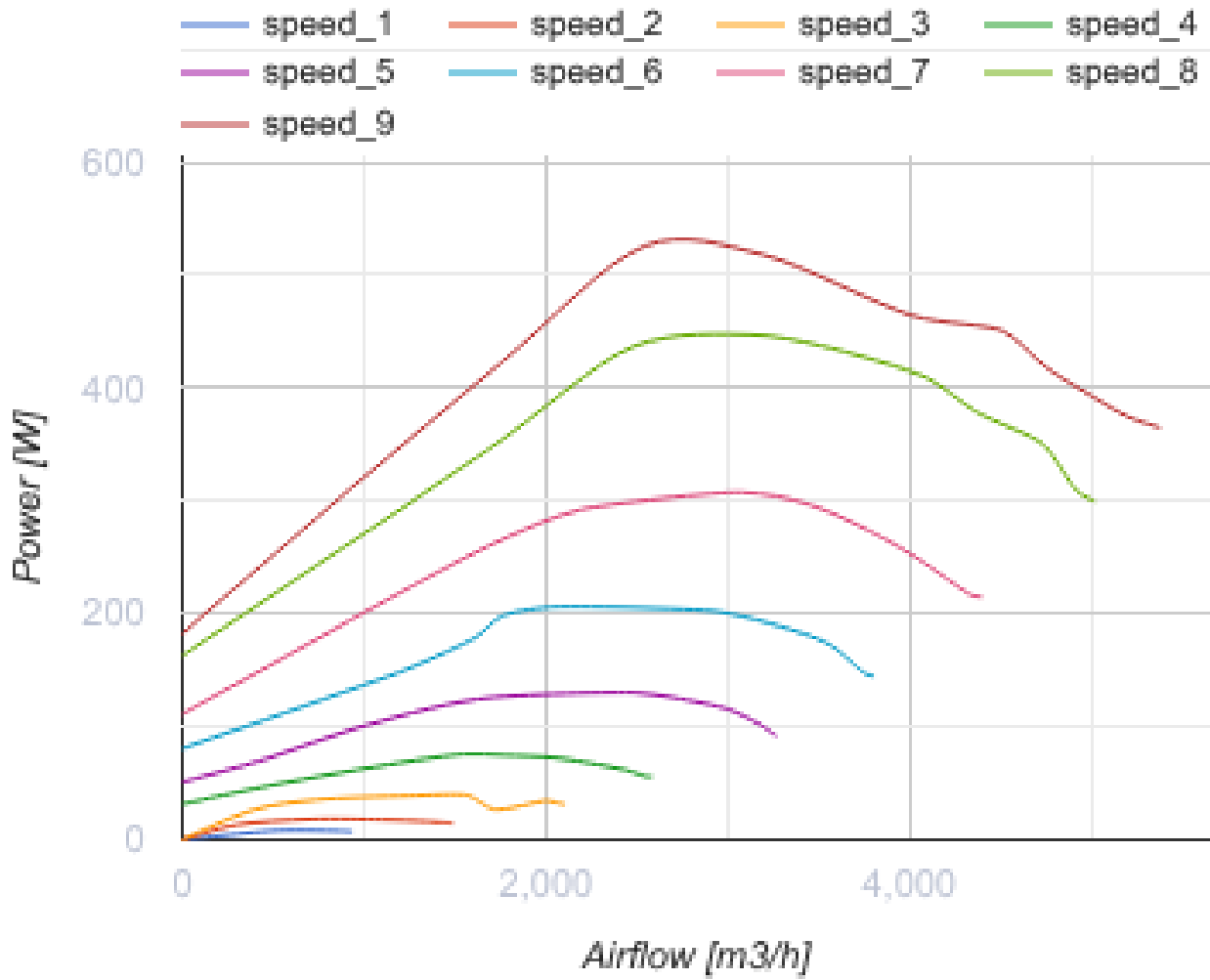


Roof centrifugal fans with vertical air discharge with EC-motors

- Sound pressure level LpA at 3 m: 58
- Impeller type: Centrifugal impeller with backward curved blades
- Casing material: Galvanized steel

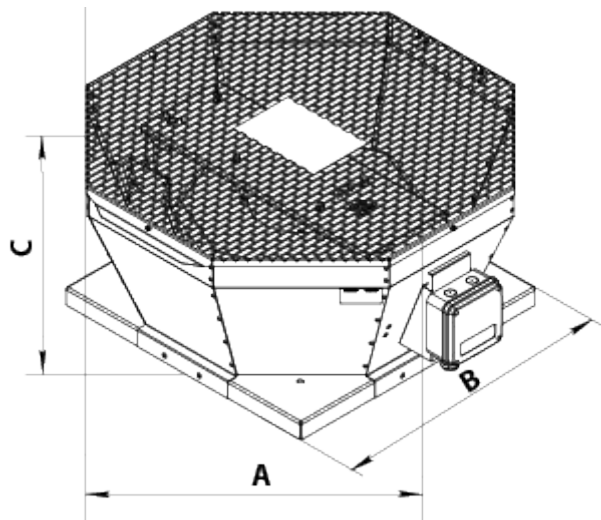
|  | Unit of measurement | VKVz 400 EC |
|--|---------------------|-------------|
| Phases                                 | -                   | 1           |
| Minimum supply voltage                 | V                   | 230         |
| Maximum supply voltage                 | V                   | 230         |
| Power supply frequency                 | Hz                  | 50/60       |
| Rated power                            | W                   | 526         |
| Unit current                           | A                   | 3.9         |
| Maximum airflow                        | m <sup>3</sup> /h   | 5380        |
| Rotation speed at 50hz                 | -                   | 1450        |
| Sound pressure level LpA at 3 m        | dB(A)               | 58          |
| Weight                                 | kg                  | 27          |
| Transported air temperature (max)      | °C                  | 50          |
| Transported air temperature (min)      | °C                  | -25         |
| Ingress protection rating              | -                   | IPX4        |
| Ingress protection rating of the drive | -                   | IP54        |
| Impeller material                      | -                   | Aluminium   |





### Dimensions

| A   | B   | C   |
|-----|-----|-----|
| 738 | 598 | 371 |








## Accessories

### Speed controllers

| Name                    | Photo   | Description                    |
|-------------------------|---|--------------------------------|
| <a href="#">R-1/010</a> |  | Speed controller for EC motors |

### Accessories for roof fans

| Name                         | Photo   | Description                                  |
|------------------------------|---|--|
| <a href="#">RKV 355-400</a>  |    | Mounting frame                               |
| <a href="#">RKVI 355-400</a> |    | Mounting frame with thermal-insulating layer |
| <a href="#">FKV 355-500</a>  |    | Mating flange                                |
| <a href="#">GKV 355-500</a>  |  | Flexible connector                           |
| <a href="#">KKV 355-500</a>  |  | Backdraft damper                             |

## Ecodesign

|                                     |                |
|-------------------------------------|----------------|
| Trademark                           | Vents          |
| Model                               | VKVz 400 EC    |
| Type of drive installed             | Integrated VSD |
| Type of heat recovery system        | None           |
| Nominal external pressure (Pa)      | 341            |
| Maximum external leakage rates (%)  | 2.7            |
| Static efficiency (%)               | 65.8           |
| Declared typology                   | NRVU UVU       |
| Effective electric power input (kW) | 0.519          |
| Sound power level (dB(A))           | 78             |