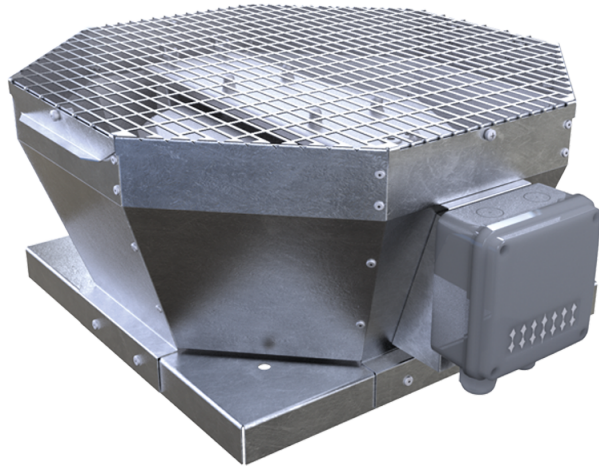


# VKVz 6E 450



Centrifugal roof fans with vertical air exhaust

- Maximum airflow: 4380
- Sound pressure level LpA at 3 m: 50
- Motor type: AC
- Impeller type: Centrifugal backward curved blades
- Casing material: Galvanized steel

	Unit of measurement	VKVz 6E 450
Speed	-	1
Minimum supply voltage	V	230
Maximum supply voltage	V	230
Power supply frequency	Hz	50
Rated power	W	268
Unit current	A	1.25
Maximum airflow	m <sup>3</sup> /h	4380
Sound pressure level LpA at 3 m	dB(A)	50
Weight	kg	45.6
Transported air temperature (max)	°C	60
Transported air temperature (min)	°C	-30
Ingress protection rating	-	IPX4
Ingress protection rating of the drive	-	IP54
ErP compliance	-	2016, 2018
Unit category	-	NRVU
Type of drive installed	-	External MSD or VSD
Type of heat recovery system	-	None
Nominal flow rate	m <sup>3</sup> /s	0.944
Nominal external pressure	Pa	126
Maximum external leakage rates	%	2.7
Static efficiency	%	46

Declared typology	-	NRVU UVU
Sound power level	dB(A)	70
Effective electric power input	kW	0.264

## Dimensions

A	B	C	ØD
738	668	430	438

