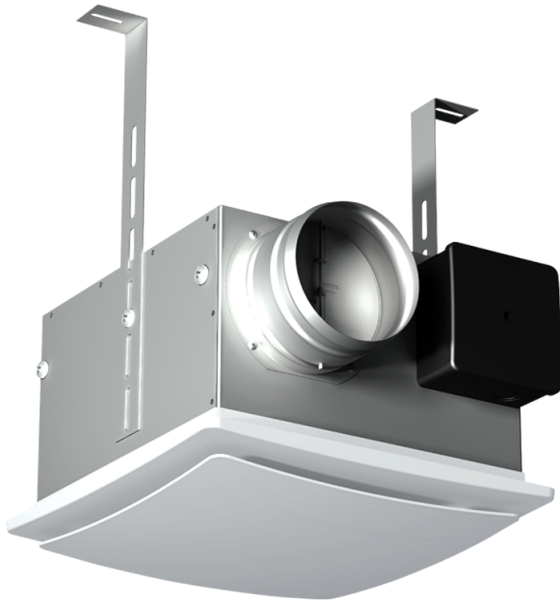


## VP 100 K Q



Centrifugal ceiling fans in steel casing with a plastic front panel

- Maximum airflow: 170
- Sound pressure level LpA at 3 m: 42
- Motor type: AC
- Impeller type: Centrifugal backward curved blades
- Casing material: Galvanized steel

	Unit of measurement	VP 100 K Q
Connected air duct size	mm	100
Speed	-	1
Minimum supply voltage	V	230
Maximum supply voltage	V	230
Power supply frequency	Hz	50/60
Rated power	W	58
Unit current	A	0.28
Maximum airflow	m <sup>3</sup> /h	170
Sound pressure level LpA at 3 m	dB(A)	42
Weight	kg	3.4
Transported air temperature (max)	°C	45
Transported air temperature (min)	°C	-25
Ingress protection rating	-	IPX4
Ingress protection rating of the drive	-	IP44
ErP compliance	-	2016, 2018
Cold - Specific energy consumption (SEC)	kWh/(m <sup>2</sup> /a)	50.5
SEC Class Cold	-	A+
Average - Specific energy consumption (SEC)	kWh/(m <sup>2</sup> /a)	23.4
SEC Class Average	-	C
Warm - Specific energy consumption (SEC)	kWh/(m <sup>2</sup> /a)	7.9
SEC Class Warm	-	F

Unit category	-	RVU
Type of ventilation unit	-	Unidirectional
Type of drive installed	-	Variable speed
Type of heat recovery system	-	None
Maximum flow rate	m <sup>3</sup> /h	120
Electric power input	W	56
Reference flow rate	m <sup>3</sup> /s	0.023
Reference pressure difference	Pa	50
Specific power input (SPI)	W/(m <sup>3</sup> /h)	0.367
Control typology	-	Local demand control
Maximum external leakage rates	%	2.7
Cold - The annual electricity consumption (AEC)	kWh/a	194
Average - The annual electricity consumption (AEC)	kWh/a	194
Warm - Jährlicher Stromverbrauch (JSV)	kWh/a	194
Cold - The annual heating saved (AHS)	kWh/a	5536
The annual heating saved (AHS) Average	kWh/a	2830
The annual heating saved (AHS) Warm	kWh/a	1280
Declared typology	-	RVU UVU
Sound power level	dB(A)	42

## Dimensions

ØD	B	H	H1	L
100	240	160	189	305

