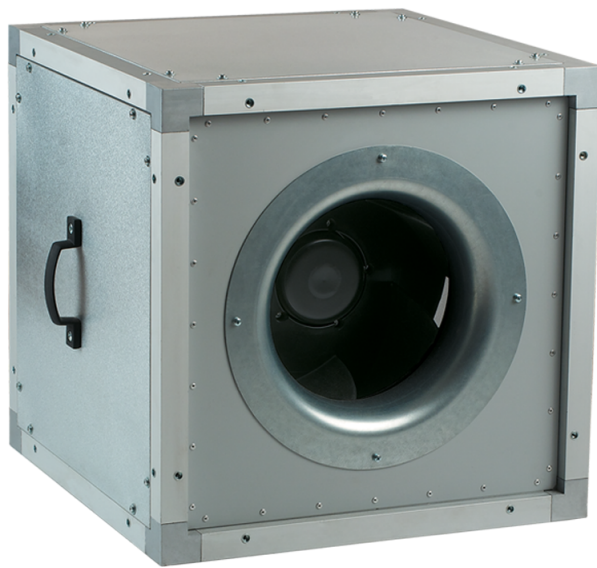


VS 560 EC



Inline centrifugal fans in heat- and sound-insulated casing

- Maximum airflow: 13600
- Sound pressure level LpA at 3 m: 50
- Sound insulation
- Motor type: EC
- Impeller type: Centrifugal backward curved blades
- Casing material: Aluzinc
- Installation in any position

	Unit of measurement	VS 560 EC
Connected air duct size	mm	560
Speed	-	1
Minimum supply voltage	V	380
Maximum supply voltage	V	480
Power supply frequency	Hz	50/60
Rated power	W	2360
Unit current	A	3.65
Maximum airflow	m ³ /h	13600
Sound pressure level LpA at 3 m	dB(A)	50
Weight	kg	60.5
Transported air temperature (max)	°C	60
Transported air temperature (min)	°C	-25
Ingress protection rating	-	IPX4
ErP compliance	-	2016, 2018
Unit category	-	NRVU
Type of drive installed	-	Integrated VSD
Type of heat recovery system	-	None
Nominal flow rate	m ³ /s	2.292
Nominal external pressure	Pa	684
Maximum external leakage rates	%	2.7
Static efficiency	%	72

Declared typology	-	NRVU UVU
Sound power level	dB(A)	70
Effective electric power input	kW	2.36

Dimensions

A
800

