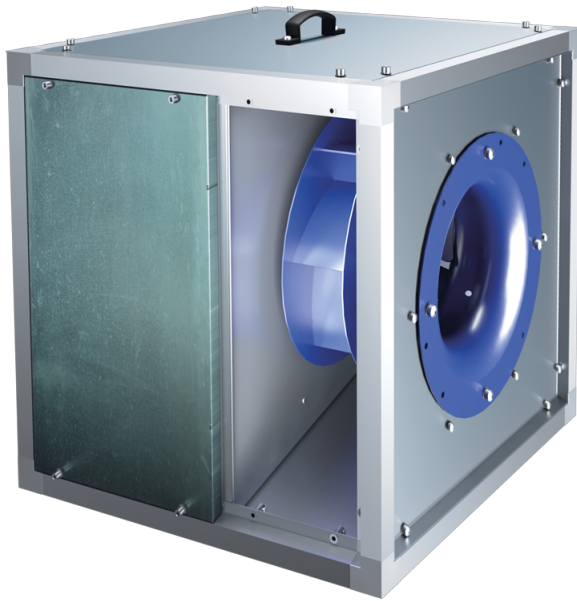


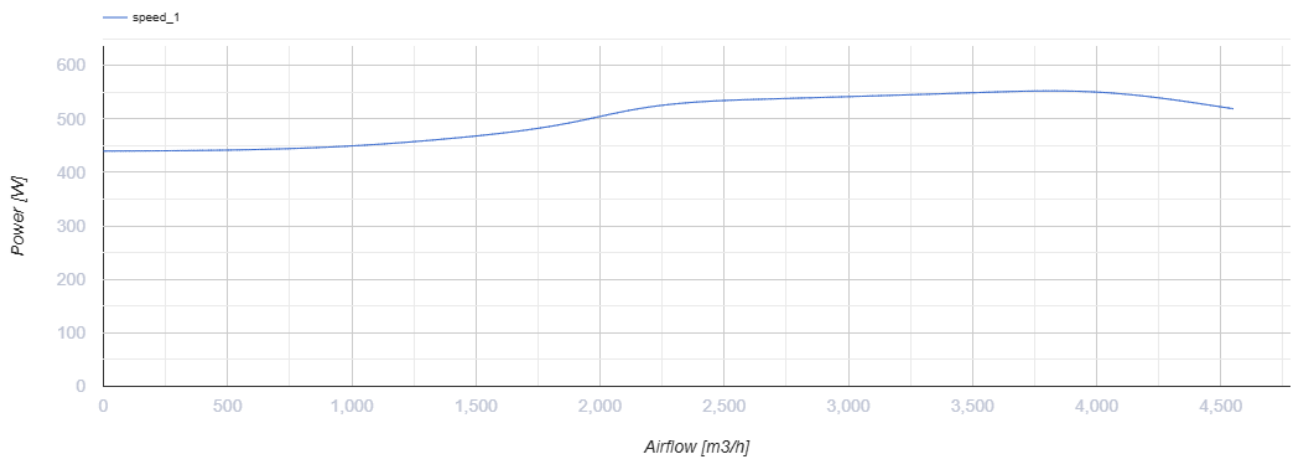
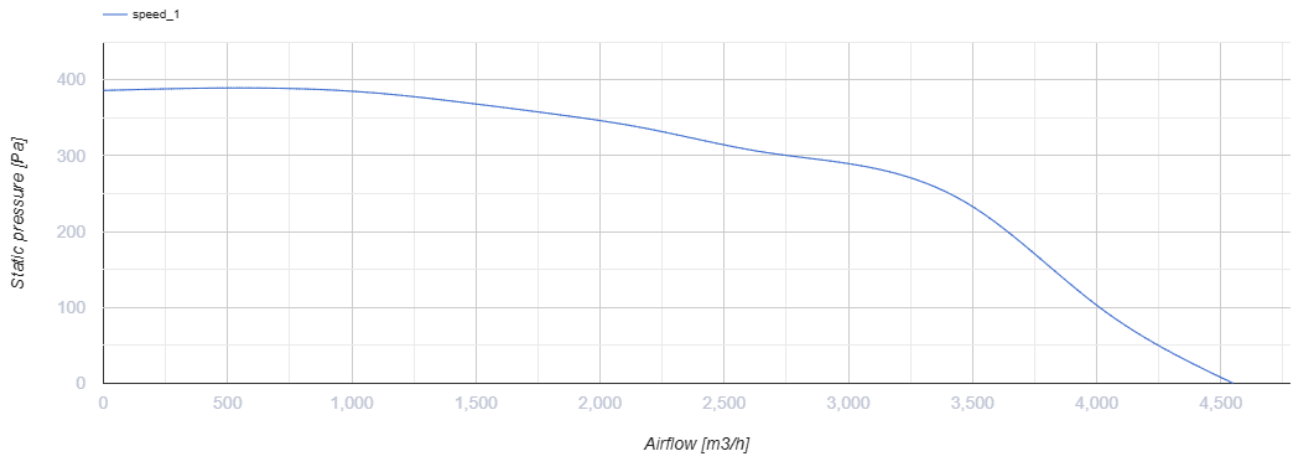
## VSK 400 4E



Centrifugal kitchen fans in sound-insulated casing

- Maximum airflow: 4550
- Sound pressure level LpA at 3 m: 50
- Sound insulation
- Motor type: AC
- Impeller type: Centrifugal impeller with backward curved blades
- Casing material: Aluzinc
- Installation in any position

	Unit of measurement	VSK 400 4E
Connected air duct size	mm	400
Speed	-	1
Phases	-	1
Minimum supply voltage	V	230
Maximum supply voltage	V	230
Power supply frequency	Hz	50
Rated power	W	550
Unit current	A	4.4
Maximum airflow	m <sup>3</sup> /h	4550
rotation speed at 50hz	-	1410
Sound pressure level LpA at 3 m	dB(A)	50
Weight	kg	60.3
Transported air temperature (max)	°C	120
Transported air temperature (min)	°C	-25
Ingress protection rating	-	IPX4



## Dimensions

L	L1	H	H1	B	B1	A	C
670	708	670	708	670	708	252	610

