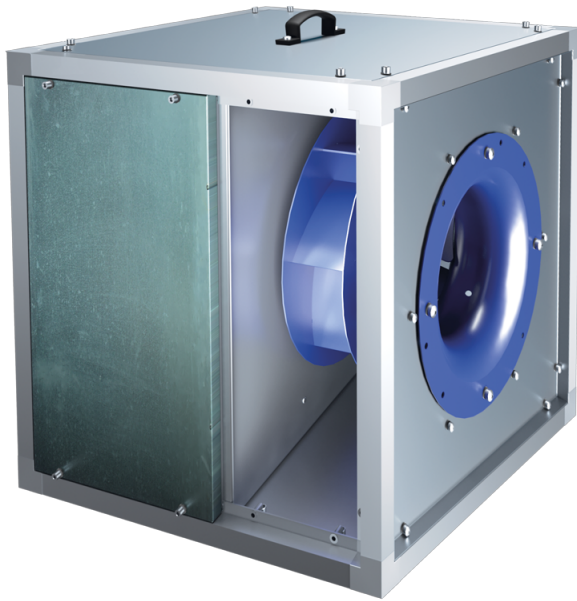


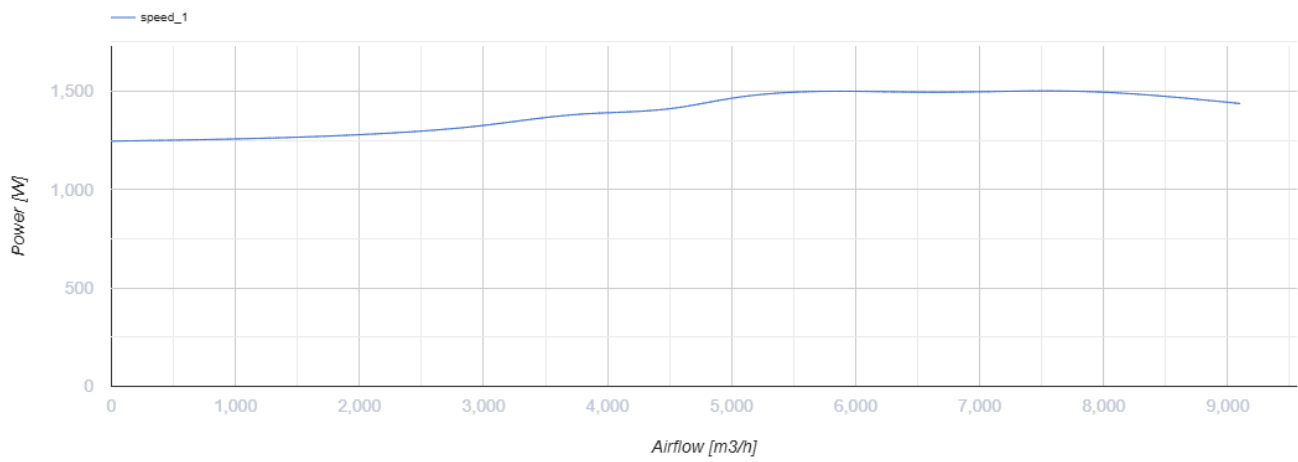
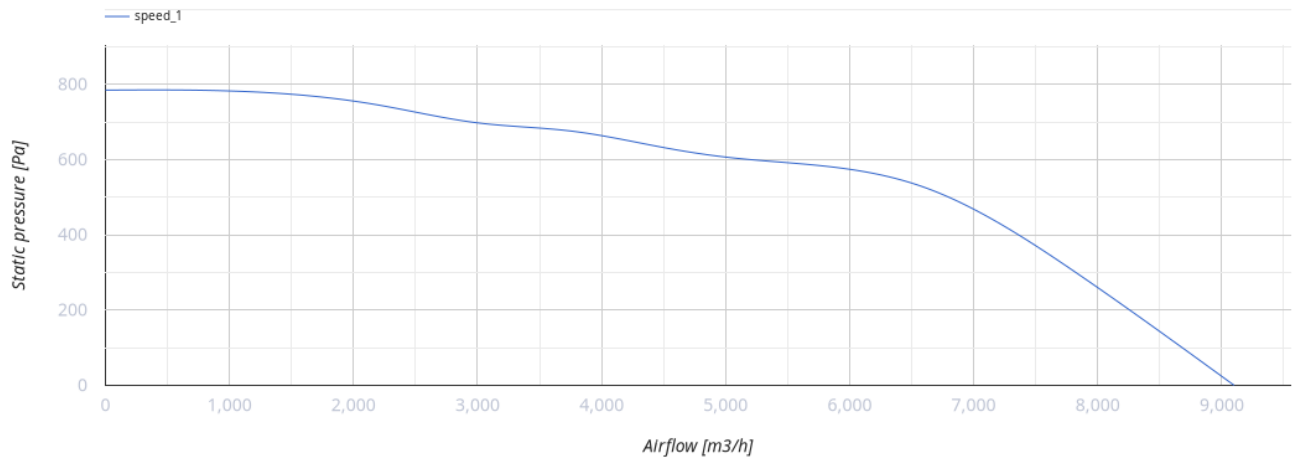
VSK 500 4E



Centrifugal kitchen fans in sound-insulated casing

- Maximum airflow: 9100
- Sound pressure level LpA at 3 m: 57
- Sound insulation
- Motor type: AC
- Impeller type: Centrifugal impeller with backward curved blades
- Casing material: Aluzinc
- Installation in any position

	Unit of measurement	VSK 500 4E
Connected air duct size	mm	500
Speed	-	1
Phases	-	1
Minimum supply voltage	V	230
Maximum supply voltage	V	230
Power supply frequency	Hz	50
Rated power	W	1500
Unit current	A	10.6
Maximum airflow	m ³ /h	9100
rotation speed at 50hz	-	1410
Sound pressure level LpA at 3 m	dB(A)	57
Weight	kg	96.3
Transported air temperature (max)	°C	120
Transported air temperature (min)	°C	-25
Ingress protection rating	-	IPX4



Dimensions

L	L1	H	H1	B	B1	A	C
820	858	820	858	820	858	321	760

