

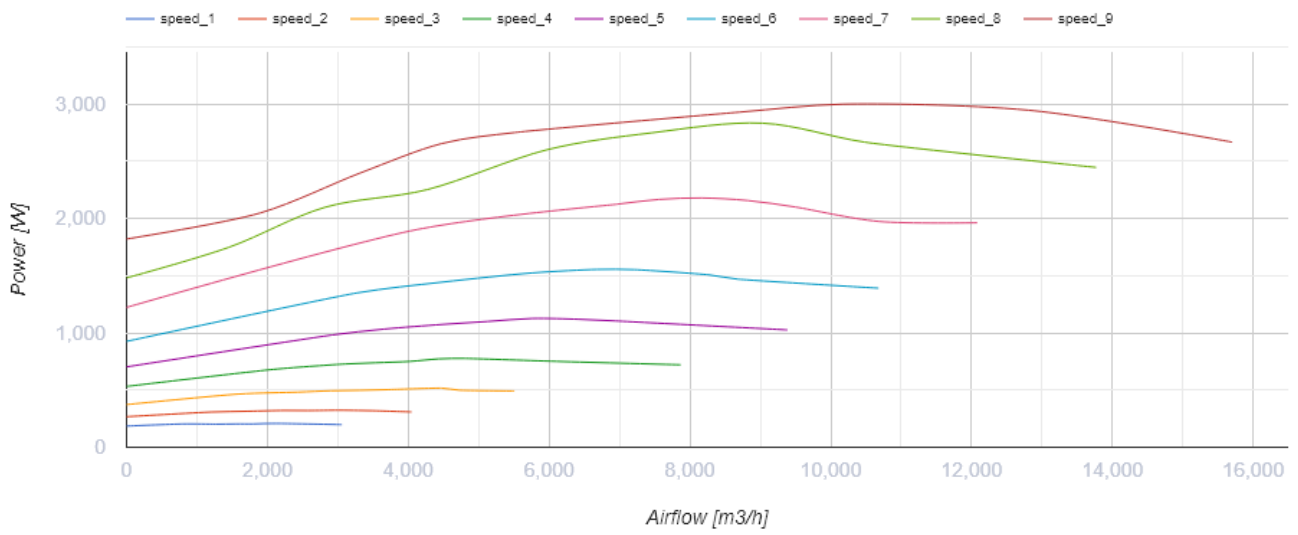
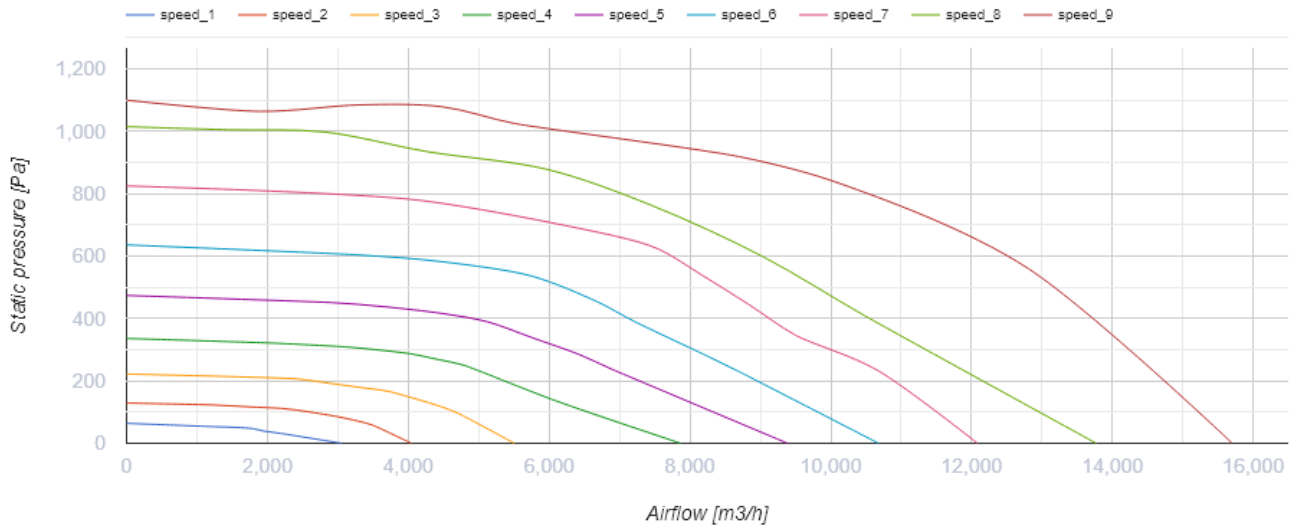
VSK 560 D EC



Centrifugal kitchen fans in sound-insulated casing

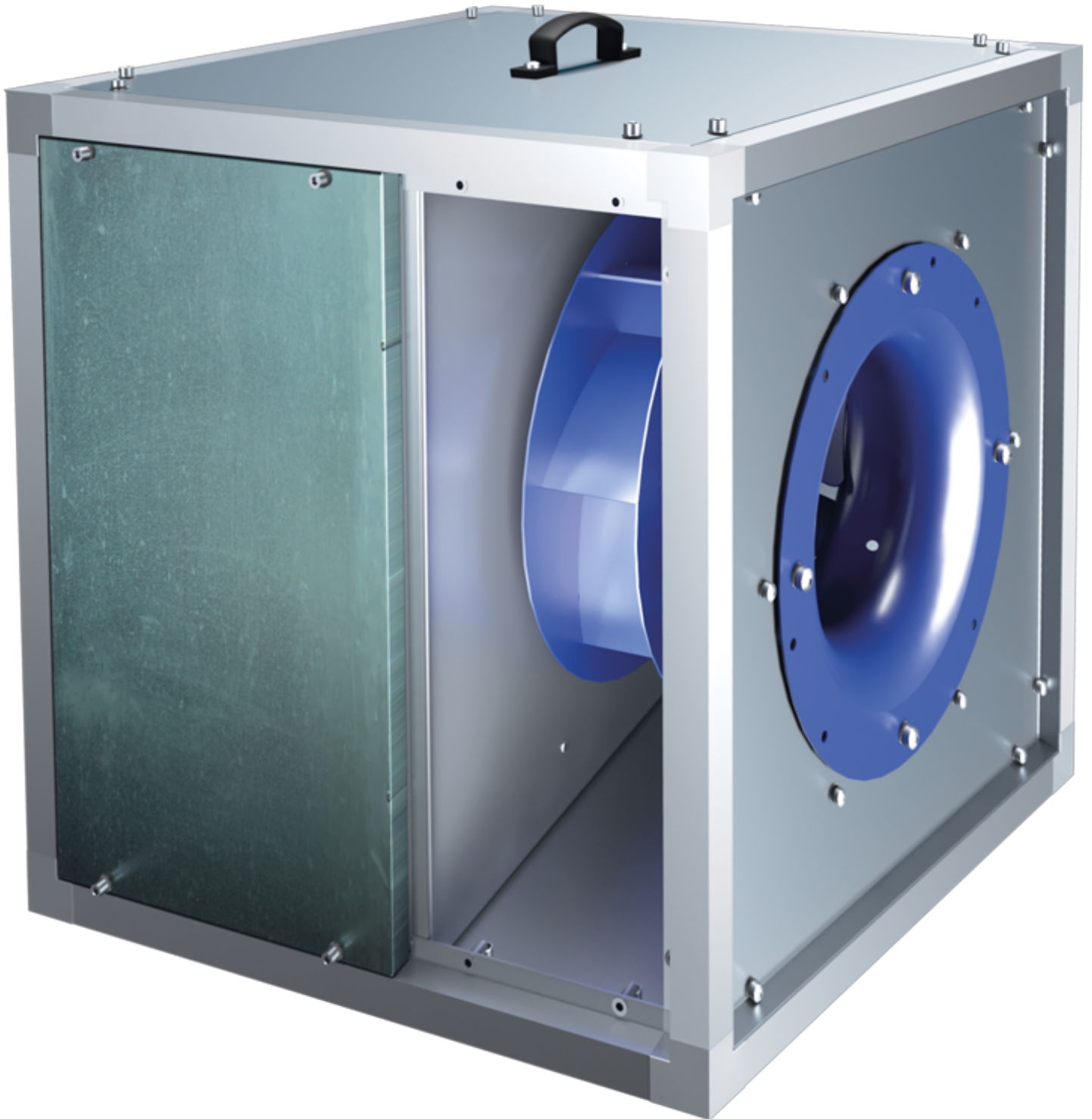
- Maximum airflow: 15700
- Sound pressure level LpA at 3 m: 64
- Fire resistance class: 120°C within 60 min
- Sound insulation
- Motor type: EC
- Impeller type: Centrifugal impeller with backward curved blades
- Casing material: Aluzinc
- Installation in any position

	Unit of measurement	VSK 560 D EC
Connected air duct size	mm	560
Speed	-	1
Phases	-	3
Minimum supply voltage	V	400
Maximum supply voltage	V	400
Power supply frequency	Hz	50/60
Rated power	W	3000
Unit current	A	6.4
Maximum airflow	m ³ /h	15700
rotation speed at 50hz	-	1500
Sound pressure level LpA at 3 m	dB(A)	64
Weight	kg	113
Transported air temperature (max)	°C	120
Transported air temperature (min)	°C	-25
Ingress protection rating	-	IPX4



Dimensions

L	L1	H	H1	B	B1	A	C
900	938	900	938	900	938	365	840



Accessories

Speed controllers

Name	Photo	Description
------	-------	-------------

[R-1/010](#)



Speed controller for EC motors