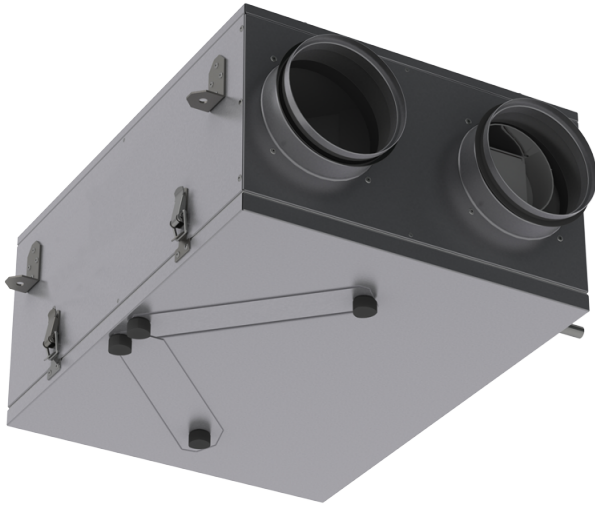


VUT 100 P mini

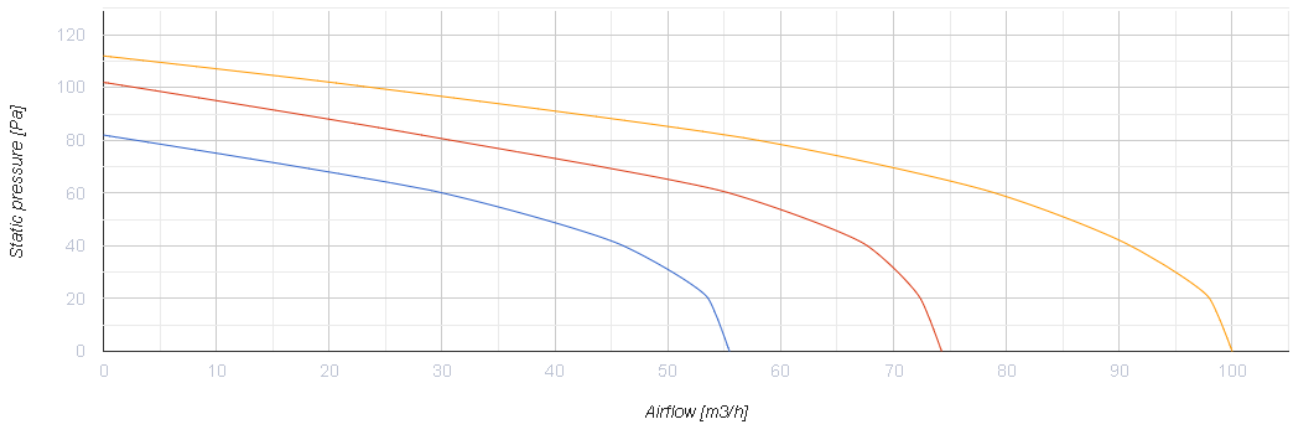


Air handling units with heat recovery in the compact sound- and heat-insulated casing equipped with a cross-flow polystyrene heat exchanger

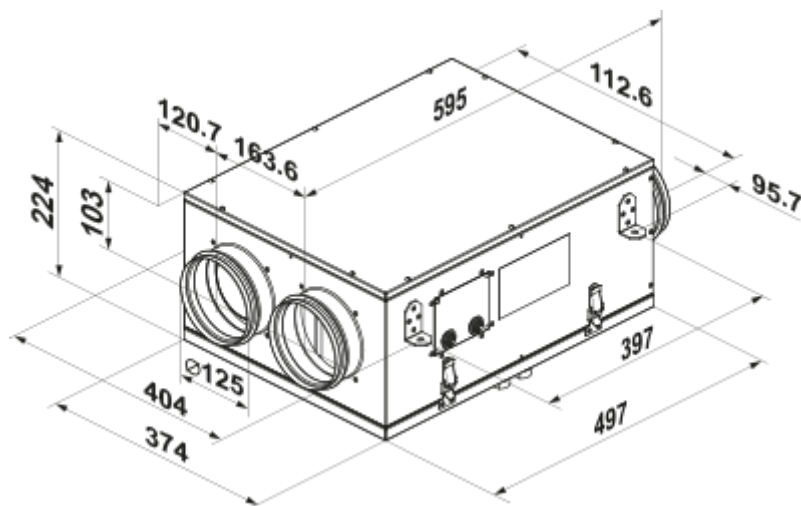
- Maximum airflow: 100
- Sound pressure level LpA at 3 m: 41
- Heat exchanger type: Cross flow
- Extract filter: G4
- Supply filter: G4
- Sound insulation
- Motor type: AC
- Control: Remote Control
- Casing material: Galvanized steel

	Unit of measurement	VUT 100 P mini		
Connected air duct size	mm	125		
Speed	-	3		
Minimum supply voltage	V	230		
Maximum supply voltage	V	230		
Power supply frequency	Hz	50		
Rated power	W	56		
Unit current	A	0.34		
Maximum airflow	m ³ /h	55	74	100
Sound pressure level LpA at 3 m	dB(A)	24	32	41
Heat recovery efficiency, max	%	76		
Heat exchanger type	-	Cross flow		
Heat exchanger material	-	Polystyrene		
Weight	kg	13		
Extract filter	-	G4		
Supply filter	-	G4		
Transported air temperature (max)	°C	40		
Transported air temperature (min)	°C	-25		
Ambient air temperature min	°C	1		
Ambient air temperature max	°C	40		
Ambient air humidity max	%	60		
Ingress protection rating	-	IP22		

Ingress protection rating of the drive	-	IP44
----------------------------------------	---	------






Dimensions





Accessories

For round ducts

Name	Photo	Description
SR 125/600		Silencer is applied for noise absorption produced during the ventilating equipment operation and spread along the ducting systems
SR 125/900		Silencer is applied for noise absorption produced during the ventilating equipment operation and spread along the ducting systems
SR 125/1200		Silencer is applied for noise absorption produced during the ventilating equipment operation and spread along the ducting systems

SRF 125/600		Silencer is applied for noise absorption produced during the ventilating equipment operation and spread along the ducting systems
SRF 125/900		Silencer is applied for noise absorption produced during the ventilating equipment operation and spread along the ducting systems
SRF 125/2000		Silencer is applied for noise absorption produced during the ventilating equipment operation and spread along the ducting systems

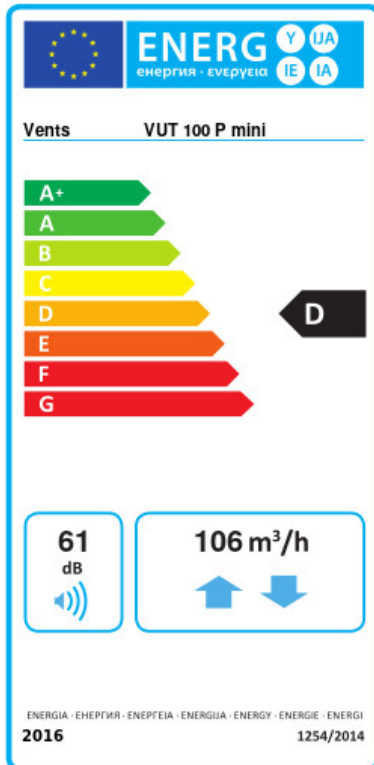
For round ducts

Name	Photo	Description
KOM 125		Spring-loaded backdraft damper for round ducts
KR 125		Air damper for air flow control in round air ducts

Other accessories

Name	Photo	Description
SF 200x190x18 G4		Panel filter G4

Ecodesign



Trademark	Vents					
Model	VUT 100 P mini					
Specific energy consumption (SEC) (kWh/(m²/a))	Cold		Average		Warm	
	-54.1	A+	-22.3	D	-1.5	F
Type of ventilation unit	Bidirectional					
Type of drive installed	Multi-speed					
Type of heat recovery system	Recuperative					
Thermal efficiency of heat recovery (%)	68					
Maximum flow rate (m³/h)	106					
Electric power input (W)	56					
Reference flow rate (m³/s)	0.021					
Reference pressure difference (Pa)	50					
Specific power input (SPI) (W/(m³/h))	0.512					
Control typology	Manual control					
Maximum internal leakage rates (%)	2.7					
Maximum external leakage rates (%)	2.7					
Declared typology	RVU BVU					
Sound power level (dB(A))	61					
The annual electricity consumption (AEC) (kWh/a)	Cold		Average		Warm	
	1224		687		642	
The annual heating saved (AHS) (kWh/a)	Cold		Average		Warm	
	7592		3881		1755	