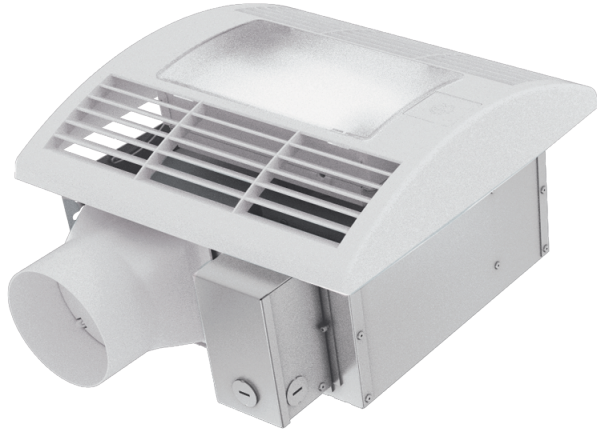





Series **CBF LP DC Light**

Ceiling bathroom fans with integrated LED-light

- Motor type: DC
- Control: Built-in control panel
- Casing material: Galvanized steel
- Timer: Turn off timer, Turn on timer
- Humidity sensor
- Motion sensor



Lineup	Connected air duct size, mm	Maximum airflow, m ³ /h	Weight, kg	Lighting	Humidity sensor	Motion sensor
 CBF LP 110 DC Light	100	187	5.3	✓		
 CBF LP 110 DC Light TH	100	187	5.3	✓	✓	
 CBF LP 110 DC Light TP	100	187	5.3	✓		✓