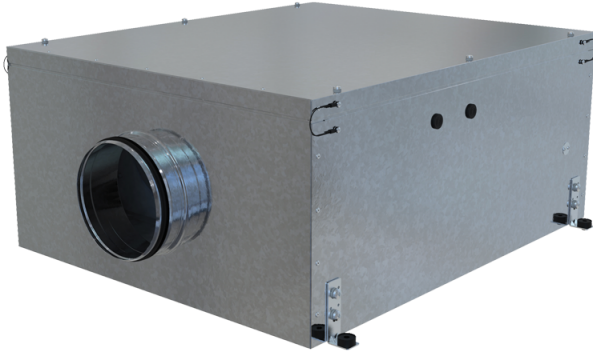

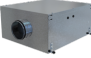
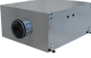



Series DuoVent EC

Centrifugal fans in a metal casing for round air ducts

- Sound insulation
- Motor type: EC
- Impeller type: Mixed-flow
- Casing material: Galvanized steel



Lineup	Connected air duct size, mm	Rated power, W	Maximum airflow, m ³ /h
 DuoVent 150 EC	150	56	450
 DuoVent 200 EC	200	117	910
 DuoVent 250 EC	250	170	1390
 DuoVent 315 EC	315	535	2780
 DuoVent 355 EC	355	354	3060
 DuoVent 400 EC	400	737	4410