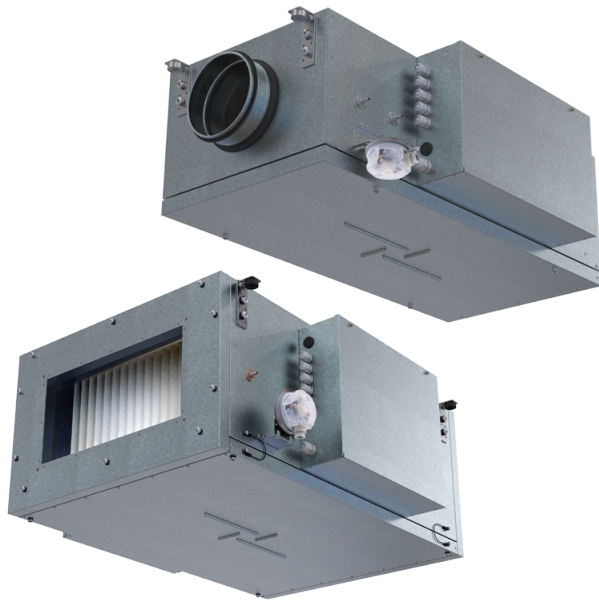
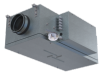


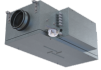
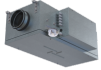



Series **MPA E EC A31**

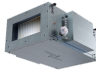

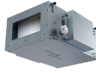


Air supply units in the sound- and heat-insulated casing

- Filter: Coarse 90%/G4 (опция ePM1 70%/F7), Coarse 90% / G4 (option ePM1 70% / F7)
- Sound insulation
- Motor type: EC
- Reheater: Electric
- BMS protocol: ModBus
- Control: Wired control panel
- Casing material: Aluzinc steel

Lineup	Connected air duct size, mm	Maximum supply voltage, V	Rated power, W	Maximum airflow, m ³ /h	Sound pressure level LpA at 3 m, dB(A)
 MPA 300 E-1.7 EC A31	160	230	64	365	35
 MPA 300 E-5.1 EC A31	160	230	64	354	35
 MPA 400 E-2.4 EC A31	200	230	62	430	31
 MPA 400 E-3.3 EC A31	200	230	62	430	31
 MPA 400 E-6.0 EC A31	200	400	62	430	31
 MPA 700 E-3.0 EC A31	250	400	116	760	41

 MPA 700 E-6.0 EC A31	250	400	116	760	41
 MPA 700 E-9.0 EC A31	250	400	116	760	41
 MPA 1000 E-6.0 EC A31	400x200	400	165	1000	45
 MPA 1000 E-12.0 EC A31	400x200	400	165	1000	45
 MPA 1000 E-15.0 EC A31	400x200	400	165	1000	45
 MPA 1500 E-9.0 EC A31	500x250	400	223	1500	46
 MPA 1500 E-14.0 EC A31	500x250	400	223	1500	46
 MPA 1500 E-18.0 EC A31	500x250	400	223	1500	46
 MPA 2000 E-12.0 EC A31	500x300	400	406	2450	48
 MPA 2000 E-18.0 EC A31	500x300	400	406	2450	48
 MPA 2000 E-24.0 EC A31	500x300	400	406	2450	48
 MPA 3000 E-18.0 EC A31	600x300	400	472	3150	47
 MPA 3000 E-27.0 EC A31	600x300	400	472	3150	47
 MPA 3000 E-45.0 EC A31	600x300	400	472	3150	47

 MPA 4000 E-24.0 EC A31	700x400	400	717	5000	49
 MPA 4000 E-45.0 EC A31	700x400	400	717	5000	49
 MPA 4000 E-54.0 EC A31	700x400	400	717	5000	49