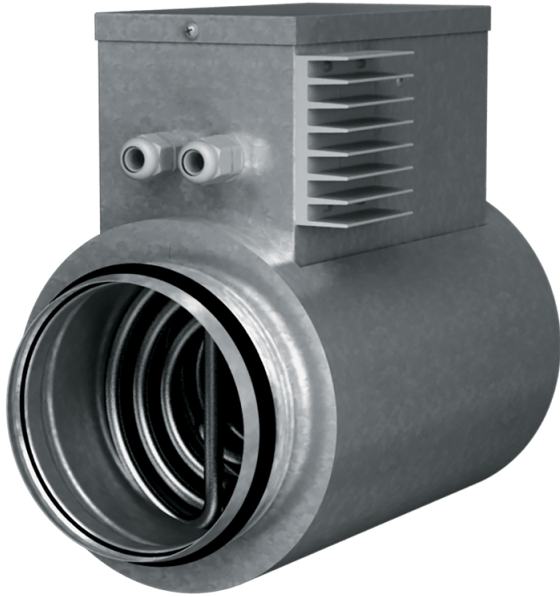









## Series **NKD A21 V.2**



Duct heater for supply air post-heating with external control

- Casing material: Galvanized steel

Lineup	
	NKD 125-0,6-1 A21 V.2
	NKD 125-0,8-1 A21 V.2
	NKD 125-1,2-1 A21 V.2
	NKD 150-0,8-1 A21 V.2
	NKD 150-1,2-1 A21 V.2
	NKD 150-1,7-1 A21 V.2
	NKD 150-2,0-1 A21 V.2



NKD 160-0,8-1 A21 V.2



NKD 160-1,2-1 A21 V.2



NKD 160-1,7-1 A21 V.2



NKD 160-2,0-1 A21 V.2



NKD 200-1,2-1 A21 V.2



NKD 200-1,7-1 A21 V.2



NKD 200-2,0-1 A21 V.2



NKD 250-1,2-1 A21 V.2



NKD 250-2,0-1 A21 V.2



NKD 250-3,0-1 A21 V.2



NKD 315-2,0-1 A21 V.2



NKD 315-3,0-1 A21 V.2