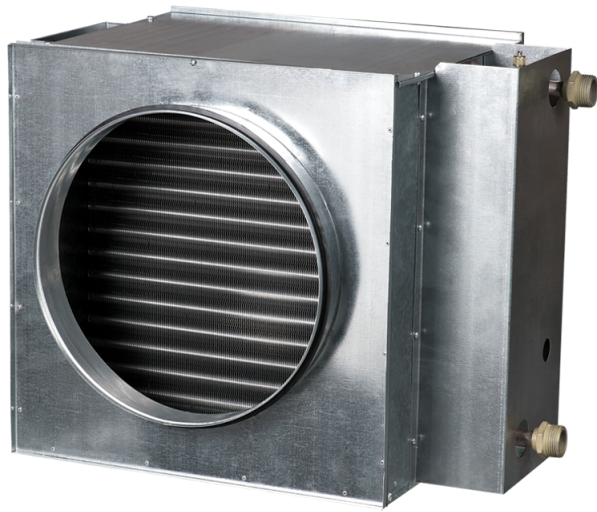




Series **NKV (round)**



Duct water heaters are designed for heating of supply air in round ventilation systems. They can be also applied in supply or supply and exhaust ventilating units

- Casing material: Galvanized steel

Lineup	
	NKV 100-2
	NKV 100-4
	NKV 125-2
	NKV 125-4
	NKV 150-2
	NKV 150-4
	NKV 160-2



NKV 160-4



NKV 200-2



NKV 200-4



NKV 250-2



NKV 250-4



NKV 315-2



NKV 315-4