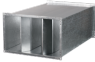
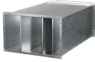
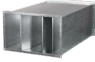






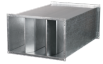
Series **SR (rectangular)**

The plate silencer is applied for noise absorption produced during the ventilating equipment operation and spread along the ducting systems

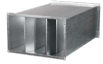
- Casing material: Galvanized steel



| Lineup | |
|---|------------|
|  | SR 400x200 |
|  | SR 500x250 |
|  | SR 500x300 |
|  | SR 600x300 |
|  | SR 600x350 |
|  | SR 700x400 |
|  | SR 800x500 |



SR 900x500



SR 1000x500