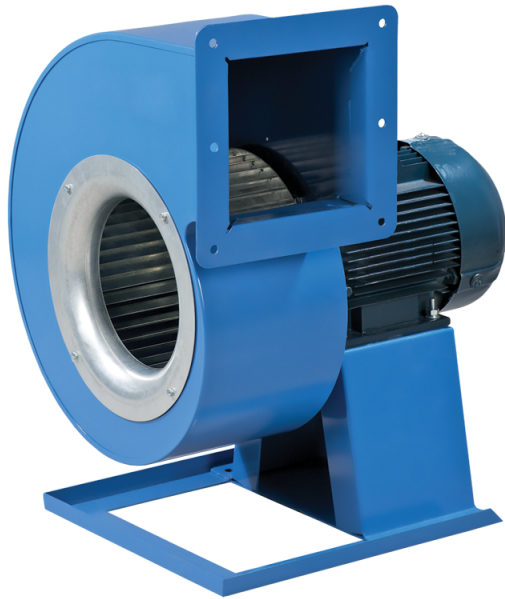
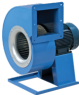
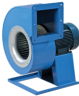
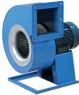
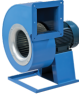
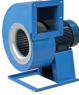
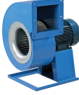
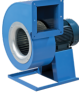


Series VCUN



Scroll single-inlet centrifugal fans with the impeller mounted directly on the three phase asynchronous motor shaft. The fan is designed for supply and exhaust ventilation systems

- Motor type: AC
- Impeller type: Centrifugal forward curved blades
- Casing material: Polypropylene/Thermoplastic elastomer

Lineup	Rated power, W	Maximum airflow, m ³ /h
 VCUN 140x74-0,25-4 R90	250	450
 VCUN 140x74-0,37-2 R90	370	710
 VCUN 160x74-0,55-4 R90	550	750
 VCUN 160x74-0,75-2 R90	750	1540
 VCUN 180x74-0,55-4 R90	550	1030
 VCUN 180x74-1,1-2 R90	1100	1950
 VCUN 200x93-0,55-4 R90	550	1615

	VCUN 200x93-1,1-2 R90	1100	1900
	VCUN 225x103-1,1-4 R90	1100	2125
	VCUN 225x103-2,2-2 R90	2200	3350
	VCUN 240x114-2,2-4 R90	2200	2930
	VCUN 240x114-3,0-2 R90	3000	4350
	VCUN 250x127-1,5-6 R90	1500	2415
	VCUN 250x127-2,2-4 R90	2200	3720
	VCUN 250x127-5,5-2 R90	5500	4820
	VCUN 280x127-1,5-6 R90	1500	3450
	VCUN 280x127-2,2-4 R90	2200	4395
	VCUN 280x127-5,5-2 R90	5500	6330
	VCUN 315x143-2,2-6 R90	2200	4375
	VCUN 315x143-4,0-4 R90	4000	6530
	VCUN 355x143-2,2-6 R90	2200	5090

	VCUN 355x143-4,0-4 R90	4000	8150
	VCUN 400x183-1,5-8 R90	1500	6545
	VCUN 400x183-2,2-6 R90	2200	8100
	VCUN 400x183-5,5-4 R90	5500	10175
	VCUN 450x203-11,0-4 R90	11000	19000
	VCUN 450x203-3,0-8 R90	3000	10230
	VCUN 450x203-4,0-6 R90	4000	11150
	VCUN 500x229-11,0-4 R90	11000	17250
	VCUN 500x229-5,5-8 R90	5500	11550
	VCUN 500x229-7,5-6 R90	7500	14960