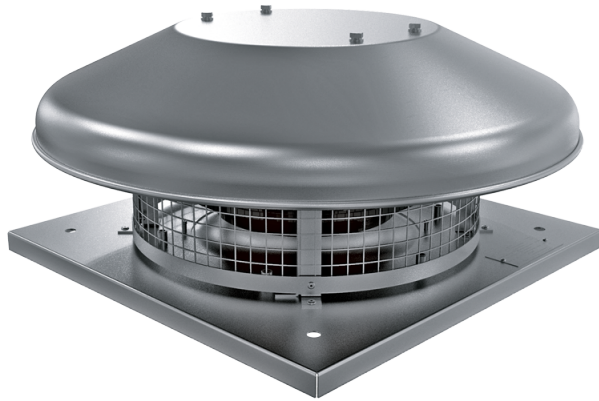









Series VKHC

Centrifugal roof fans with horizontal air exhaust

- Motor type: AC
- Impeller type: Centrifugal backward curved blades
- Casing material: Aluminium



Lineup	Rated power, W	Maximum airflow, m ³ /h
 VKHC 2E 190	64	670
 VKHCA 2E 190	64	670
 VKHC 2E 220	108	915
 VKHCA 2E 220	108	915
 VKHC 2E 225	123	940
 VKHCA 2E 225	123	940
 VKHC 4E 225	49	760

 VKHCA 4E 225	49	760
 VKHC 2E 250	184	1485
 VKHCA 2E 250	184	1485
 VKHC 4E 250	48	830
 VKHCA 4E 250	48	830
 VKHC 4E 280	125	1500
 VKHCA 4E 280	125	1500
 VKHC 2E 310	324	2150
 VKHCA 2E 310	324	2150
 VKHC 4E 310	141	2265
 VKHCA 4E 310	141	2265
 VKHC 4D 310	155	2300
 VKHCA 4D 310	155	2300