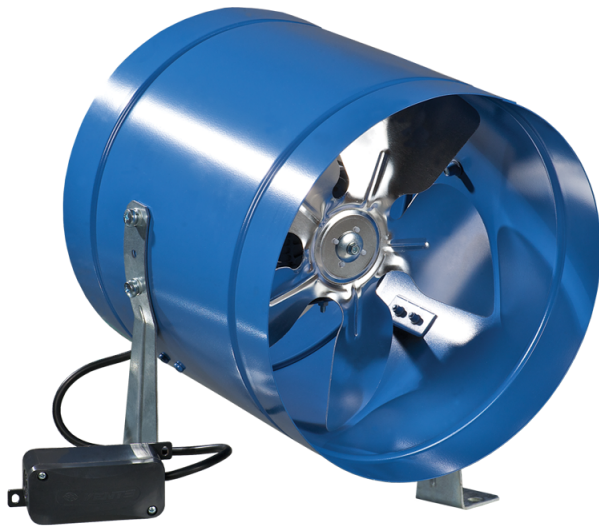
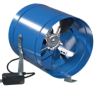





## Series VKOM



Low pressure axial fans in the steel casing for wall mounting

- Motor type: AC
- Impeller type: Axial
- Casing material: Coated steel

Lineup	Connected air duct size, mm	Rated power, W	Maximum airflow, m <sup>3</sup> /h
 VKOM 150	150	36	200
 VKOM 200	200	43	405
 VKOM 250	250	68	1070
 VKOM 315	315	110	1700