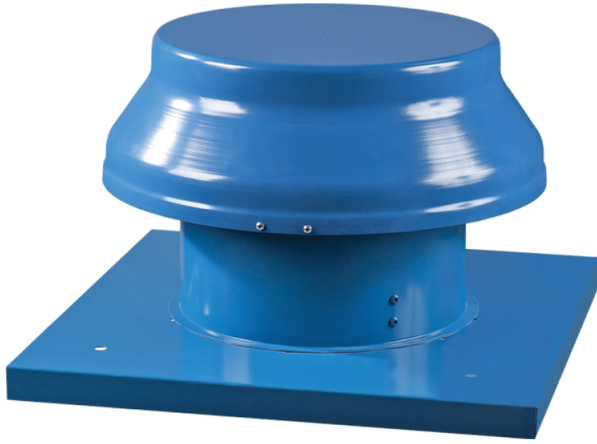
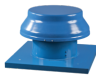
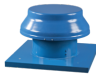
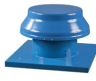
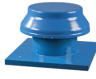
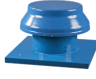


Series **VOK**

Axial roof fans in the steel casing with the horizontal exhaust of air

- Motor type: AC
- Impeller type: Axial
- Casing material: Coated steel



Lineup	Rated power, W	Maximum airflow, m ³ /h
 VOK 2E 200	55	860
 VOK 2E 250	80	1050
 VOK 2E 300	145	2230
 VOK 4E 250	50	800
 VOK 4E 300	75	1340
 VOK 4E 350	140	2500