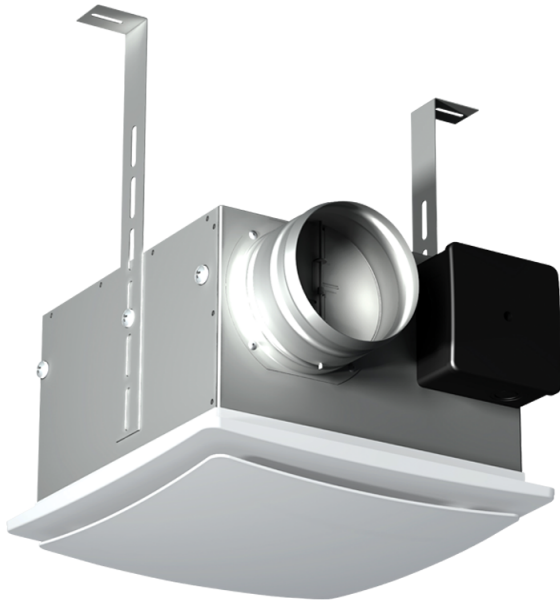




## Series VP



Centrifugal ceiling fans in steel casing with a plastic front panel

- Motor type: AC
- Impeller type: Centrifugal backward curved blades
- Casing material: Galvanized steel

Lineup	Connected air duct size, mm	Rated power, W	Maximum airflow, m <sup>3</sup> /h
 VP 100 K	100	61	240
 VP 100 K Q	100	58	170
 VP 125 K	125	61	310
 VP 125 K Q	125	56	225
 VP 150 K	150	112	485