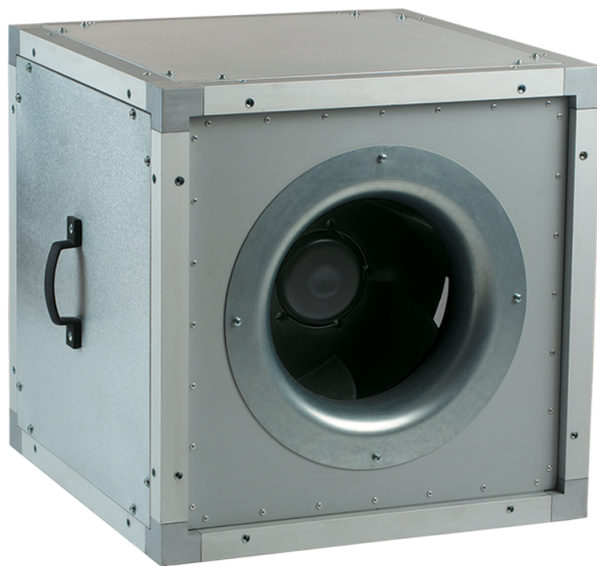









## Series **VS EC**



Inline centrifugal fans in heat- and sound-insulated casing

- Sound insulation
- Motor type: EC
- Impeller type: Centrifugal backward curved blades
- Casing material: Polypropylene/Thermoplastic elastomer

Lineup	Connected air duct size, mm	Rated power, W	Maximum airflow, m <sup>3</sup> /h
 VS 315 EC	315	150	2370
 VS 355 EC	355	250	3830
 VS 400 EC	400	500	5660
 VS 450 EC	450	750	6800
 VS 500 EC	500	1320	10450
 VS 560 EC	560	2360	13600
 VS 630 EC	630	2750	16740