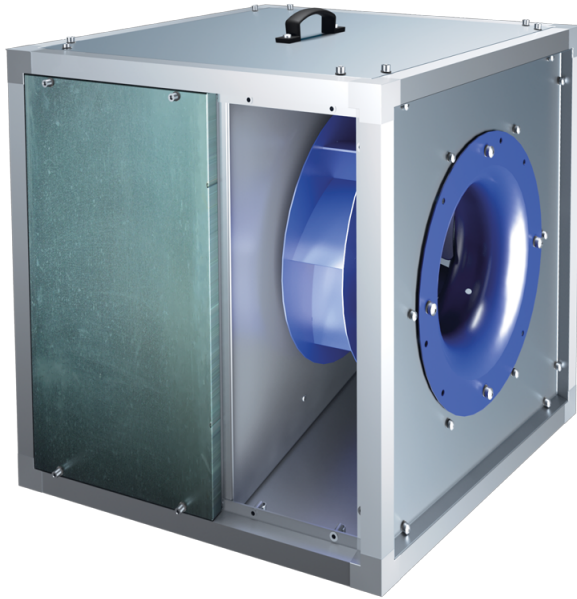
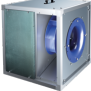
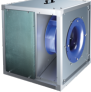
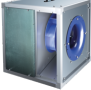
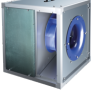
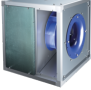
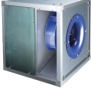
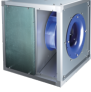


Series **VSK**



Centrifugal kitchen fans in sound-insulated casing

- Sound insulation
- Motor type: AC
- Impeller type: Centrifugal impeller with backward curved blades
- Casing material: Aluzinc

Lineup	Rated power, W	Maximum airflow, m ³ /h
 VSK 315 2D	1100	4460
 VSK 315 2E	1100	4460
 VSK 315 4D	250	1910
 VSK 315 4E	250	1910
 VSK 355 4D	370	3200
 VSK 355 4E	370	3200
 VSK 400 4D	550	4550

 VSK 400 4E	550	4550
 VSK 450 4D	750	5920
 VSK 450 4E	750	5920
 VSK 500 4D	1500	9100
 VSK 500 4E	1500	9100
 VSK 560 4D	3000	12750
 VSK 630 4D	4000	17300
 VSK 710 4D	7500	25500
 VSK 710 6D	2200	16400
 VSK 800 6D	4000	21860