

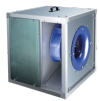
## Series **VSK 60 Hz**



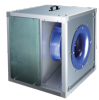
Centrifugal kitchen inline fans in sound-insulated casings with operational temperature of 120 °C

- Sound insulation
- Motor type: AC
- Impeller type: Centrifugal impeller with backward curved blades
- Casing material: Aluzinc

### Lineup



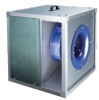
VSK 315 2D (400/60)



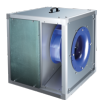
VSK 315 2E (230/60)



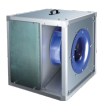
VSK 315 4D (400/60)



VSK 315 4E (230/60)



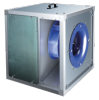
VSK 355 4D (400/60)



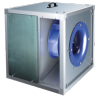
VSK 355 4E (230/60)



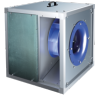
VSK 400 4D (400/60)



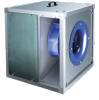
VSK 400 4E (230/60)



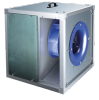
VSK 450 4D (400/60)



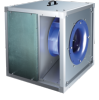
VSK 450 4E (230/60)



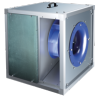
VSK 500 4D (400/60)



VSK 560 4D (400/60)



VSK 630 4D (400/60)



VSK 630 6D (400/60)



VSK 710 6D (400/60)



VSK 800 6D (400/60)