

pocket catalogue

HYDROPONICS & INDOOR

GARDENING
VENTILATION 2022



Series
TT



Inline mixed-flow fans
with air capacity
up to 520 m³/h

Technical data:

	TT 100		TT 125		TT 125 S		TT 150/TT 160	
Speed	min	max	min	max	min	max	min	max
Voltage [V/50 (60) Hz]	1 ~ 230							
Power [W]	21	33	23	37	32	60	30	60
Current [A]	0.11	0.21	0.18	0.27	0.14	0.27	0.17	0.27
Maximum airflow [m ³ /h]	145	187	220	280	295	440	405	520
RPM	2180	2385	1950	2455	1850	2510	1680	2460
Noise level at 3 m [dBA]	27	36	28	37	31	42	33	44
Transported air temperature [°C]	-25 ... +60							
Protection rating	IPX4							

Modifications:



TT ... RV
built-in speed switch,
power cable with EURO-plug



TT ... P
built-in smooth speed control module,
power cable with EURO-plug



TT ... UnR1
built-in speed control module with thermostat and
remote temperature probe, power cable with
EURO-plug

Order code:

Fan series	Duct diameter	Extra options
TT	100 125 150 160	<p>S: high-powered motor*</p> <p>V: integrated 3-position speed switch (max speed/OFF/min speed)</p> <p>P: built-in smooth speed control module, power cable with EURO-plug</p> <p>U: built-in speed control module with thermostat and temperature probe integrated into fan's duct, power cable with EURO-plug</p> <p>Un: built-in speed control module with thermostat and remote 4 m long temperature probe, power cable with EURO-plug</p> <p>R1: 2 m long power cable with EURO-plug</p> <p>R1V: integrated speed switch (max speed/OFF/min speed), 2 m long power cable with EURO-plug</p>

* for only VENTS TT125 model

Series
TT PRO



Inline mixed-flow fans
with air capacity
up to 2050 m³/h

Technical data:

	TT PRO 100		TT PRO 125		TT PRO 150 TT PRO 160		TT PRO 200		TT PRO 250		TT PRO 315	
Speed	min	max	min	max	min	max	min	max	min	max	min	max
Voltage [V/50 (60) Hz]	1 ~ 230											
Power [W]	23	25	25	29	42	50	76	108	125	177	230	320
Current [A]	0.10	0.11	0.11	0.13	0.19	0.22	0.34	0.48	0.54	0.79	1.0	1.42
Maximum airflow [m ³ /h]	180	245	240	350	415	565	830	1040	1110	1400	1570	2050
RPM [min ⁻¹]	2050	2620	1630	2300	1940	2620	1915	2380	1955	2440	1890	2430
Noise level at 3 m [dBA]	27	32	29	34	32	44	39	45	44	51	41	52
Transported air temperature [°C]	-25 ... +60											
Protection rating	IPX4											

Modifications:



TT PRO ... P
built-in smooth speed control module,
power cable with EURO-plug

TT PRO ... U
built-in speed control module with thermostat
and integrated temperature sensor, power cable
with EURO-plug

TT PRO ... Un
built-in speed control module with thermostat
and remote 4 m long temperature sensor, power cable
with EURO-plug

Order code:

Fan series	Duct diameter	Extra options
TT PRO	100	V: integrated 3-position speed switch (max speed/OFF/min speed) P: built-in smooth speed control module, power cable with EURO-plug U: built-in speed control module with thermostat and temperature probe integrated into fan's duct, power cable with EURO-plug Un: built-in speed control module with thermostat and remote 4 m long temperature probe, power cable with EURO-plug R1: 2 m long power cable with EURO-plug R1V: integrated speed switch (max speed/OFF/min speed), 2 m long power cable with EURO-plug
	125	
	150	
	160	
	200	
	250	
315		

Series
TT PRO ... EC



Inline mixed-flow fans
with air capacity
up to 1970 m³/h

Technical data:

	TT PRO 100 EC	TT PRO 125 EC	TT PRO 150 EC TT PRO 160 EC	TT PRO 200 EC	TT PRO 250 EC	TT PRO 315 EC
Voltage [V/50 (60) Hz]	1 ~ 230					
Power [W]	30	40	55	123	169	284
Current [A]	0.29	0.37	0.48	1.02	1.38	1.25
Maximum airflow [m ³ /h]	300	450	600	1040	1285	1970
RPM [min ⁻¹]	3680	3750	3390	3390	2870	2826
Noise level at 3 m [dBA]	47	49	46	49	53	55
Transported air temperature [°C]	-25 ... +55					
Protection rating	IPX4					
SEC class	B		-			

Modifications:



TT PRO ... EC P
built-in smooth speed control module,
power cable with EURO-plug



TT PRO ... EC U
built-in speed control module with thermostat
and integrated temperature sensor, power cable
with EURO-plug



TT PRO ... EC UnR1
built-in speed control module with thermostat
and remote 4 m long temperature sensor, power cable
with EURO-plug

Order code:

Fan series	Duct diameter	Motor type	Extra options
TT PRO	100	EC: synchronous electronically commutated motor	P: built-in smooth speed control module, power cable with EURO-plug U: built-in speed control module with thermostat and temperature probe integrated into fan's duct, power cable with EURO-plug Un: built-in speed control module with thermostat and remote 4 m long temperature probe, power cable with EURO-plug R1: 2 m long power cable with EURO-plug
	125		
	150		
	160		
	200		
	250		
315			



Series **Boost 200** Series **Boost 355-400**



Inline fans in a polymer casing with the air flow up to 3350 m³/h

Technical data:

	Boost 200			Boost 355			Boost 400		
	min	mid	max	min	mid	max	min	mid	max
Speed									
Voltage [V/50 Hz]	1~230								
Power [W]	82	101	113	126	131	150	197	204	224
Current [A]	0.37	0.45	0.51	0.60	0.58	0.66	0.91	0.90	0.98
Max. airflow [m ³ /h]	752	978	1140	2090	2296	2485	2677	3136	3350
RPM [min ⁻¹]	1866	2400	2738	1350	1400	1470	1320	1390	1446
Sound pressure level at 3 m distance [dBA]	39	46	50	38	38	43	40	42	43
Maximum transported air temperature [°C]	-25...+55								
Protection rating	IPX4								
Motor protection rating	IP20								



Series **Boost 200 EC** Series **Boost 315-400 EC**



Inline fans in a polymer casing with the air flow up to 5700 m³/h

	Boost 200 EC	Boost 315 EC S	Boost 355 EC	Boost 355 EC S	Boost 400 EC
Voltage [V/50 Hz]	1~230				
Power [W]	121	353	353	701	726
Current [A]	0.96	1.56	1.56	3.10	3.23
Maximum air flow [m ³ /h]	1250	3250	3685	4630	5700
RPM [min ⁻¹]	3110	2424	2470	3175	2580
Sound pressure level at 3 m distance [dBA]	50	55	55	60	60
Maximum transported air temperature [°C]	-25...+55				
Protection rating	IPX4				
Motor protection rating	IP44				

Order code:

Fan series	Duct diameter	Motor type	Extra options
Boost	200 315 355 400	EC: synchronous electronically commutated motor S: high-powered motor	P: built-in smooth speed control module, power cable with EURO-plug U: built-in speed control module with thermostat and temperature probe integrated into fan's duct, power cable with EURO-plug Un: built-in speed control module with thermostat and remote 4 m long temperature probe, power cable with EURO-plug

Series
VK



Inline centrifugal fans in plastic casing with air capacity up to 1700 m³/h

Technical data:

	VK 100 Q	VK 100	VK 125 Q	VK 125	VK 150	VK 200	VKS 200	VK 250 Q	VK 250	VK 315	VKS 315
Voltage [V/50 Hz]	1 ~ 230										
Power [W]	60	80	61	79	80	107	173	108	173	200	310
Current [A]	0.38	0.34	0.38	0.34	0.35	0.47	0.76	0.47	0.76	0.88	1.36
Maximum airflow [m ³ /h]	205	250	260	355	460	780	930	865	1080	1340	1700
RPM [min ⁻¹]	2650	2820	2610	2800	2725	2660	2125	2560	2090	2655	2590
Noise level at 3 m [dBA]	36	40	36	40	42	46	48	47	49	48	57
Transported air temperature [°C]	-25 ... +55					-25 ... +50					
Protection rating	IPX4										

Modifications:



VK ... Duo R1
double-speed motor, built-in speed switch (high speed/OFF/low speed), power cable with EURO-plug



VK ... P
built-in smooth speed control module, power cable with EURO-plug



VK ... U
built-in speed control module with thermostat and integrated temperature probe, power cable with EURO-plug

Order code:

Fan series		Duct diameter	Extra options
VK	S: high-powered motor	100 125 150* 200 250 315	Q: low-noise motor P: built-in smooth speed control module, power cable with EURO-plug U: built-in speed control module with thermostat and temperature probe integrated into fan's duct, power cable with EURO-plug Un: built-in speed control module with thermostat and remote 4 m long temperature probe, power cable with EURO-plug R1: 2 m long power cable with EURO-plug

* VK 150 model is compatible with air ducts both Ø150 and 160 mm

Series
VK ... Duo



built-in speed switch



Technical data:

	VK 100 Duo		VK 125 Duo		VK 150 Duo		VK 200 Duo		VK 250 Duo		VK 315 Duo	
	min	max	min	max	min	max	min	max	min	max	min	max
Speed												
Voltage [V/50 Hz]	1 ~ 230											
Power [W]	45	57	45	58	46	59	82	95	147	176	143	173
Current [A]	0.21	0.25	0.21	0.26	0.22	0.26	0.37	0.43	0.66	0.76	0.68	0.76
Maximum airflow [m³/h]	157	264	191	329	264	445	430	741	642	1126	758	1268
RPM [min ⁻¹]	1820	2440	1810	2380	1805	2420	1920	2470	1940	2370	1870	2410
Noise level at 3 m [dBA]	29	38	30	39	32	40	33	42	37	46	37	48
Transported air temperature [°C]	-25 ... +55											
SEC class	D						C				-	
Protection rating	IPX4											

Double-speed inline centrifugal fans in plastic casing with air capacity **up to 1268 m³/h**

Order code:

Fan series	Duct diameter	Motor type	Extra options
VK	100 125 150* 200 250 315	Duo: double-speed motor, built-in speed switch (min speed/OFF/max speed)	R1: 2 m long power cable with EURO-plug

* VK 150 Duo model is compatible with air ducts both Ø150 and 160 mm

Series
VK ... EC



Inline centrifugal fans in plastic casing with air capacity up to 1500 m³/h

Technical data:

	VK 100 EC	VK 125 EC	VK 150 EC	VK 200 EC	VK 250 EC	VK 315 EC
Voltage [V/50 Hz]	1 ~ 230					
Power [W]	82	84	82	84	165	165
Current [A]	0.62	0.64	0.63	0.64	1.10	1.15
Maximum airflow [m ³ /h]	340	420	630	885	1250	1500
RPM [min ⁻¹]	3400	3600	3400	2700	2600	2500
Noise level at 3 m [dBA]	40	42	45	47	48	48
Transported air temperature [°C]	-25 ... +60					
SEC class	B					-
Protection rating	IPX4					

Modifications:



VK ... EC P
built-in smooth speed control module, power cable with EURO-plug



VK ... EC U
built-in speed control module with thermostat and integrated temperature probe, power cable with EURO-plug



VK ... EC Un
built-in speed control module with thermostat and remote 4 m long temperature sensor, power cable with EURO-plug

Order code:

Fan series	Duct diameter	Motor type	Extra options
VK	100 125 150* 200 250 315	EC: synchronous electronically commutated motor	P: built-in smooth speed control module, power cable with EURO-plug U: built-in speed control module with thermostat and temperature probe integrated into fan's duct, power cable with EURO-plug Un: built-in speed control module with thermostat and remote 4 m long temperature probe, power cable with EURO-plug R1: 2 m long power cable with EURO-plug

* VK 150 model is compatible with air ducts both Ø150 and 160 mm



Series
VKM 100-315

ErP 2018

Inline centrifugal fans in steel casing with air capacity up to 1920 m³/h



Series
VKM 355-450

ErP 2018

Inline centrifugal fans in steel casing with air capacity up to 5300 m³/h

Technical data:

	VKM 100 Q	VKM 100	VKM 125 Q	VKM 125	VKM 150 E	VKM 150	VKMS 150	VKM 160	VKMS 160
Voltage [V/50 Hz]	1~220-240								
Power [W]	45	60	47	64	63	91	119	99	121
Current [A]	0.24	0.28	0.25	0.29	0.26	0.42	0.52	0.44	0.53
Max. air capacity [m ³ /h]	233	279	326	360	435	540	650	567	690
RPM [min ⁻¹]	2780	2840	2760	2840	2830	2770	2820	2770	2800
Noise level @ 3 m [dBA]	38	40	37	40	40	45	48	45	48
Transported air temperature [°C]	-25...+45								
Protection rating	IPX4								
Motors protection rating	IP44								
SEC class	C	C	C	C	C	C	C	C	C

	VKM200	VKMS 200	VKM 250 E	VKM 250	VKM 315	VKMS 315	VKM 355 Q	VKM 400	VKM 450	
Voltage [V/50 Hz]	1~220-240									
Power [W]	135	193	95	194	171	295	233	460	665	
Current [A]	0.59	0.84	0.47	0.85	0.77	1.34	1.06	2.23	2.89	
Max. air capacity [m ³ /h]	1070	1150	900	1420	1440	1920	2250	3090	5300	
RPM [min ⁻¹]	2710	2780	2050	2790	2600	2720	1375	1370	1265	
Noise level @ 3 m [dBA]	48	49	47	50	52	54	58	61	65	
Transported air temperature [°C]	-25...+45						-40...+80		-40...+70	
Protection rating	IPX4									
Motors protection rating	IP44						IP54			
SEC class	C	-	C	-	-	-	-	-	-	

Order code:

Fan series		Duct diameter	Extra options
VKM	S: high-powered motor	100	Q: low-noise motor P: built-in smooth speed control module, power cable with EURO-plug R1: 2 m long power cable with EURO-plug
		125	
		150	
		160	
		200	
		250	
		315	
		355	
		400	
450			



Inline centrifugal fans in steel casing with air capacity up to 1370 m³/h



Inline centrifugal fans in steel casing with air capacity up to 4790 m³/h

Technical data:

	VKM 100 EC	VKM 125 EC	VKM 150 EC	VKM 160 EC	VKM 200 EC
Voltage [V/50 Hz]	1 ~ 230				
Power [W]	90	83	107	108	83
Current [A]	0.70	0.58	0.89	0.90	0.63
Maximum airflow [m ³ /h]	345	480	700	785	845
RPM [min ⁻¹]	3600	3400	3060	3030	2500
Noise level at 3 m [dBA]	44	45	48	48	47
Transported air temperature [°C]	-25...+60				
SEC class	B				
Protection rating	IPX4				

	VKMS 200 EC	VKM 250 EC	VKM 315 EC	VKMS 315 EC	VKM 355 EC	VKM 400 EC
Voltage [V/50 Hz]	1 ~ 230					
Power [W]	100	164	164	183	693	704
Current [A]	0.74	1.15	1.15	1.44	3.07	3.13
Maximum airflow [m ³ /h]	1010	1230	1370	1820	3450	4790
RPM [min ⁻¹]	2400	2900	2900	2780	2768	2206
Noise level at 3 m [dBA]	48	46	48	49	62	67
Transported air temperature [°C]	-25...+60					
SEC class	B	-	-	-	-	-
Protection rating	IPX4					

Order code:

Fan series	Duct diameter	Motor type	Extra options
VKM	100 125 150 160 200 250 315 355 400	EC: synchronous electronically commutated motor	<p>P: built-in smooth speed control module, power cable with EURO-plug</p> <p>U: built-in speed control module with thermostat and temperature probe integrated into fan's duct, power cable with EURO-plug</p> <p>Un: built-in speed control module with thermostat and remote 4 m long temperature probe, power cable with EURO-plug</p> <p>R1: 2 m long power cable with EURO-plug</p>

Series
VKMz



Inline centrifugal fans in galvanized steel casing with air capacity up to 1540 m³/h

Technical data:

	VKMz 100 Q	VKMz 100	VKMz 125 Q	VKMz 125	VKMz 150	VKMSz 150	VKMz 160
Voltage [V/50 Hz]	1~ 220-240						
Power [W]	42	62	60	78	64	127	78
Current [A]	0.19	0.28	0.37	0.34	0.29	0.56	0.34
Maximum air flow [m ³ /h]	230	250	230	330	455	710	455
RPM [min ⁻¹]	2732	2812	2605	2820	2780	2760	2760
Sound pressure level at 3 m distance [dBA]	35	46	35	46	44	48	46
Maximum transported air temperature [°C]	-25...+55	-25...+55	-25...+55	-25...+55	-25...+50	-25...+60	-25...+55
Mass [kg]	2.5	2.8	2.7	2.9	3.2	4.8	3.2
Protection rating	IPX4						
Motor protection rating	IP44						

	VKMz 200 Q	VKMz 200	VKMz 250 Q	VKMz 250	VKMz 315 Q	VKMz 315
Voltage [V]	1~ 220-240					
Power [W]	130	144	134	152	151	185
Current [A]	0.56	0.63	0.59	0.66	0.66	0.81
Maximum air flow [m ³ /h]	900	1000	980	1070	1330	1540
RPM [min ⁻¹]	2814	2824	2785	2765	2680	2730
Sound pressure level at 3 m distance [dBA]	48	50	51	52	52	53
Maximum transported air temperature [°C]	-25...+50	-25...+50	-25...+50	-25...+50	-25...+50	-25...+45
Mass [kg]	5.5	5.6	5.1	5.1	6.5	6.5
Protection rating	IPX4					
Motor protection rating	IP44					

Order code:

Fan series		Duct diameter	Extra options
VKMz	S: high-powered motor	100 125 150 160 200 250 315	Q: low-noise motor P: built-in smooth speed control module, power cable with EURO-plug R1: 2 m long power cable with EURO-plug

NEW!Series
Stream

Inline mixed-flow fans in sound- and heat-insulated casing with air capacity **up to 540 m³/h**

Technical data:

	Stream 100/125			Stream 100/125			Stream 150/160		
Duct diameter	100			125			150/160		
Speed	min	mid	max	min	mid	max	min	mid	max
Voltage [V/50 Hz]	1~230			1~230			1~230		
Power [W]	28	31	32	31	33	34	25	46	51
Current [A]	0.13	0.14	0.15	0.14	0.14	0.16	0.20	0.21	0.24
Maximum air flow [m ³ /h]	114	147	220	164	216	320	242	320	540
RPM [min ⁻¹]	1568	1952	2362	1552	1952	2356	1982	2374	2738
Sound pressure level at 3 m distance [dBA]	19	23	27	20	22	28	20	26	33
Maximum transported air temperature [°C]	-25...+55			-25...+55			-25...+55		
Protection rating	IPX4			IPX4			IPX4		
Motor protection rating	IP20			IP20			IP20		

	Stream 100/125 EC	Stream 100/125 EC	Stream 150/160 EC
Duct diameter	100	125	150/160
Voltage [V/50 Hz]	1~230	1~230	1~230
Power [W]	30	40	55
Current [A]	0.29	0.37	0.48
Maximum air flow [m ³ /h]	310	475	600
RPM [min ⁻¹]	3680	3680	3390
Sound pressure level at 3 m distance [dBA]	33	35	38
Maximum transported air temperature [°C]	-25...+55	-25...+55	-25...+55
Protection rating	IPX4	IPX4	IPX4
Motor protection rating	IP44	IP44	IP44

Order code:

Fan series	Duct diameter	Motor type	Extra options
Stream	100 125 150 160	EC: synchronous electronically commutated motor	V: integrated 3-position speed switch (max speed/OFF/min speed) T: adjustable timer from 2 to 30 minutes P: built-in smooth speed control module, power cable with EURO-plug U: built-in speed control module with thermostat and temperature probe integrated into fan's duct, power cable with EURO-plug Un: built-in speed control module with thermostat and remote 4 m long temperature probe, power cable with EURO-plug

NEW!Series
Stream EC

Inline mixed-flow fans in sound- and heat-insulated casing with air capacity **up to 600 m³/h**



Series
Boost-I



Inline mixed-flow fans in sound- and heat-insulated casing.
Air flow up to **3150 m³/h**

Technical data:

	BOOST-I 200			COMING SOON	BOOST-I 250			COMING SOON	BOOST-I 315		
	min	mid	max	min	mid	max	min	mid	max		
Speed											
Voltage [V]	1~230										
Frequency [Hz]	50										
Power [W]	82	104	113	144	173	188	273	373	442		
Current [A]	0.37	0.46	0.51	0.70	0.81	0.84	1.26	1.66	1.99		
Max. air flow [m ³ /h]	692	906	1110	1007	1404	1670	1697	2648	3150		
Max. air flow [l/s]	192	252	308	280	390	464	471	736	875		
RPM [min ⁻¹]	2229	2634	2823	2292	2626	2876	2184	2778	2838		
Noise level at 3 m [dBA]	37	42	44	38	43	45	43	45	49		
Transported air temperature [°C]	-25...+55										
Protection rating	IPX4										
Motor protection rating	IP20										

Order code: _____

Fan series	Duct diameter	Extra options
Boost-I	200 250 315	<p>T: turn-off delay timer adjustable from 2 to 30 minutes.</p> <p>U: speed controller with an electronic thermostat and a temperature sensor integrated inside an air duct. Temperature-based operation logic.</p> <p>Un: speed controller with an electronic thermostat and a temperature sensor fixed on a 4-meter cable. Temperature-based operation logic.</p> <p>R: power cord with a mains plug.</p> <p>V: three-position speed switch.</p>



Series
Boost-I EC



Inline mixed-flow fans in sound-
and heat-insulated casing.
Air flow up to **2905 m³/h**

Technical data:

	Boost-I 200 EC	COMING SOON Boost-I 250 EC	COMING SOON Boost-I 315 EC
Voltage [V/50 (60) Hz]		1~230	
Power [W]	121	168	290
Current [A]	0.96	1.34	1.28
Max. air flow [m ³ /h]	1210	1750	2905
Max. air flow [l/s]	336	486	807
RPM [min ⁻¹]	3100	3282	2724
Noise level at 3m [dBA]	47	48	50
Transported air temperature [°C]		-25...+55	
Protection rating		IPX4	
Motor protection rating		IP44	

Order code: _____

Fan series	Duct diameter	Motor type	Extra options
Boost-I EC	200 250 315	EC: synchronous electronically commutated motor	U: speed controller with an electronic thermostat and a temperature sensor integrated inside an air duct. Temperature-based operation logic. Un: speed controller with an electronic thermostat and a temperature sensor fixed on a 4-meter cable. Temperature-based operation logic. R: power cord with a mains plug. P: integrated smooth speed controller.

Series
TT Silent-M



Inline mixed-flow fans in sound- and heat-insulated casing with air capacity **up to 2050 m³/h**

Technical data:

	TT Silent-M 100		TT Silent-M 125		TT Silent-M 150 TT Silent-M 160		TT Silent-M 200		TT Silent-M 250		TT Silent-M 315	
Speed	min	max	min	max	min	max	min	max	min	max	min	max
Voltage [V/50 (60) Hz]	1 ~ 230											
Power [W]	24	26	25	29	45	52	78	110	125	177	230	320
Current [A]	0.10	0.11	0.11	0.13	0.20	0.23	0.35	0.49	0.54	0.79	1.00	1.42
Maximum airflow [m ³ /h]	170	240	230	340	405	555	810	1020	1110	1400	1570	2050
RPM [min ⁻¹]	2030	2630	1650	2310	1970	2645	2015	2445	1955	2440	1890	2430
Noise level at 3 m [dBA]	24	29	23	28	26	33	31	36	34	38	36	40
Transported air temperature [°C]	-25 ... +60											
SEC class	D		D		C		C		-		-	
Protection rating	IPX4											

Modifications:



TT Silent-M ... P
built-in smooth speed control module,
power cable with EURO-plug



TT Silent-M ... U
built-in speed control module with
thermostat and integrated temperature
sensor, power cable with EURO-plug



TT Silent-M ... Un
built-in speed control module with
thermostat and integrated temperature
sensor, power cable with EURO-plug

Order code:

Fan series	Duct diameter	Extra options
TT Silent-M	100	V: integrated 3-position speed switch (max speed/OFF/min speed) P: built-in smooth speed control module, power cable with EURO-plug U: built-in speed control module with thermostat and temperature probe integrated into fan's duct, power cable with EURO-plug Un: built-in speed control module with thermostat and remote 4 m long temperature probe, power cable with EURO-plug R1: 2 m long power cable with EURO-plug R1V: integrated speed switch (max speed/OFF/min speed), 2 m long power cable with EURO-plug
	125	
	150	
	160	
	200	
	250	
315		



Series
TT Silent-M ... EC



Inline mixed-flow fans in sound- and heat-insulated casing with air capacity **up to 1970 m³/h**

Technical data:

	TT Silent-M 100 EC	TT Silent-M 125 EC	TT Silent-M 150 EC TT Silent-M 160 EC	TT Silent-M 200 EC	TT Silent-M 250 EC	TT Silent-M 315 EC
Voltage [V/50 (60) Hz]	1 ~ 230					
Power [W]	30	40	55	123	169	284
Current [A]	0.29	0.37	0.48	1.02	1.38	1.25
Maximum airflow [m ³ /h]	300	450	600	1040	1285	1970
RPM [min ⁻¹]	3680	3750	3390	3390	2870	2826
Noise level at 3 m [dBA]	37	43	38	43	42	46
Transported air temperature [°C]	-25 ... +55					
SEC class	B			-		
Protection rating	IPX4					

Modifications:

TT Silent-M EC ... P
built-in smooth speed control module,
power cable with EURO-plug



TT Silent-M EC ... U
built-in speed control module with
thermostat and integrated temperature
sensor, power cable with EURO-plug



TT Silent-M EC ... Un
built-in speed control module with
thermostat and integrated temperature
sensor, power cable with EURO-plug

Order code:

Fan series	Duct diameter	Motor phase	Motor type	Extra options
TT Silent-M	100	single-phase	EC: synchronous electronically commutated motor	P: built-in smooth speed control module, power cable with EURO-plug U: built-in speed control module with thermostat and temperature probe integrated into fan's duct, power cable with EURO-plug Un: built-in speed control module with thermostat and remote 4 m long temperature probe, power cable with EURO-plug R1: 2 m long power cable with EURO-plug
	125			
	150			
	160			
	200			
	250			
	315			

Series
KSA


Centrifugal fans in heat-and sound-insulated casing with air capacity **up to 750 m³/h**

Technical data:

	KSA 100-2E	KSA 125-2E	KSA 150-2E	KSA 160-2E	KSA 200-4E
Voltage [V/50 Hz]	1 ~ 230				
Power [W]	130	155	335	335	115
Current [A]	0.60	0.70	1.50	1.50	0.50
Maximum airflow [m ³ /h]	425	505	750	750	640
RPM [min ⁻¹]	2870	2870	2870	2870	1350
Noise level at 3 m [dBA]	36.1	38.3	39.4	37.9	29.1
Transported air temperature [°C]	-25...+40				
Protection rating	IPX2				
Motor protection rating	IP44				
SEC class (+speed control and external sensor)	C	C	D	D	C

Order code:

Fan series	Duct diameter	Motor		Extra options
		Polarity	Phase	
KSA	100 125 150 160 200	2 or 4	E: single-phase	U: built-in speed control module with thermostat and temperature probe integrated into fan's duct, power cable with EURO-plug Un: built-in speed control module with thermostat and remote 4 m long temperature probe, power cable with EURO-plug R1: 2 m long power cable with EURO-plug

Series
KSB

Centrifugal fans in heat- and sound-insulated casing with air capacity up to 2150 m³/h

Technical data:

	KSB 100	KSB 125	KSB 150	KSB 160	KSB 200	KSB 200 S	KSB 250	KSB 315
Voltage [V/50 Hz]	1 ~ 230							
Power [W]	73	73	72	75	103	195	198	322
Current [A]	0.32	0.32	0.32	0.33	0.45	0.85	0.87	1.40
Maximum airflow [m ³ /h]	240	330	420	420	730	950	1300	2150
RPM [min ⁻¹]	2560	2590	2600	2690	2550	2570	2420	2670
Noise level at 3 m [dBA]	33	35	36	36	38	41	41	43
Transported air temperature [°C]	-25 ... +55				-25 ... +50			
Protection rating	IPX4							

Series
KSB ... EC

Inline centrifugal fans in heat- and sound-insulated casing with air capacity up to 1310 m³/h

Technical data:

	KSB 100 EC	KSB 125 EC	KSB 150 EC KSB 160 EC	KSB 200 EC	KSB 250 EC	KSB 315 EC
Voltage [V/50 Hz]	1 ~ 230					
Power [W]	92.7	92.6	94.8	101.6	163.7	164.3
Current [A]	0.75	0.75	0.77	0.83	1.34	1.35
Maximum airflow [m ³ /h]	278	357	425	700	1145	1260
RPM [min ⁻¹]	3200	3200	3200	2580	2510	2620
Noise level at 3 m [dBA]	32	34	35	37	40	42
Transported air temperature [°C]	-25 ... +60					
Protection rating	IPX4					

Order code:

Fan series	Duct diameter	Motor type	Extra options
KSB	100	_ : 2-pole asynchronous (AC) motor with external rotor EC: synchronous electronically commutated motor	M: motor is hanged on anti-vibration rubber mounts S: high-powered motor* U: built-in speed control module with thermostat and temperature probe integrated into fan's duct, power cable with EURO-plug Un: built-in speed control module with thermostat and remote 4 m long temperature probe, power cable with EURO-plug R1: 2 m long power cable with EURO-plug
	125		
	150		
	160		
	200		
	250		
315			

* – for only VENTS KSB 200 model



Series
KSD



Centrifugal fans in heat- and sound-insulated casing with air capacity **up to 3930 m³/h**

Technical data:

	KSD 250-6E	KSD 250 S-6E	KSD 250-4E	KSD 250 S-4E	KSD 315-6E	KSD 315 S-6E	KSD 315-4E	KSD 315 S-4E
Voltage [V/50 Hz]	1 ~ 230							
Power [W]	120	311	243	617	402	800	723	931
Current [A]	0.55	1.36	1.06	2.69	2.04	4.59	3.15	4.18
Maximum airflow [m ³ /h]	1210	1680	1520	2470	2460	3470	3200	3520
RPM [min ⁻¹]	860	940	1320	1465	920	960	1350	1430
Noise level at 3 m [dBA]	40	41	44	46	42	43	45	47
Transported air temperature [°C]	-20 ... +50							
Protection rating	IPX4							

	KSD 315/250x2-6E	KSD 315/250x2 S-6E	KSD 315/250x2-4E	KSD 315/250x2 S-4E
Voltage [V/50 Hz]	1 ~ 230			
Power [W]	427	953	764	1066
Current [A]	2.13	5.06	3.36	4.78
Maximum airflow [m ³ /h]	2610	3850	3420	3930
RPM [min ⁻¹]	955	970	1390	1455
Noise level at 3 m [dBA]	42	43	45	47
Transported air temperature [°C]	-20 ... +50			
Protection rating	IPX4			

Order code:

Fan series	Duct diameter			Motor modification			Extra options
	Exhaust branch pipe diameter	Intake branch pipe diameter*	Number of intake branch pipes	High-powered motor	Number of poles	Phase	
KSD	250	250	x 2	S	4; 6	E: single-phase	U: built-in speed control module with thermostat and temperature probe integrated into fan's duct, power cable with EURO-plug Un: built-in speed control module with thermostat and remote 4 m long temperature probe, power cable with EURO-plug R1: 2 m long power cable with EURO-plug
	315						

* intake branch pipe diameter is not stated if it equals to exhaust branch pipe diameter

Series
KSDD

Centrifugal fans in heat-
and sound-insulated MDF casing
with air capacity
up to 7000 m³/h

Technical data:

	KSDD 250 / KSDD 250 Q	KSDD 500/ KSDD 500 Q	KSDD 1000/ KSDD 1000 Q	KSDD 1500/ KSDD 1500 Q	KSDD 2500/ KSDD 2500 Q
Voltage [V/50 Hz]	1 ~ 230				
Power [W]	30	55	73	147	255
Current [A]	0.62	0.65	1	1	2.8
Maximum airflow [m ³ /h]	250	500	1000	1500	2500
RPM [min ⁻¹]	1250	1100	880	1100	880
Intake flange [mm]	200	200	250	250	250
Exhaust flange [mm]	200	200	250	250	250
Transported air temperature [°C]	-20 ... +50				
Protection rating	IP42				

	KSDD 3250 / KSDD 3250 Q	KSDD 4250 / KSDD 4250 Q	KSDD 5600/ KSDD 5600 Q	KSDD 6000/ KSDD 6000 Q	KSDD 7000/ KSDD 7000 Q
Voltage [V/50 Hz]	1 ~ 230				
Power [W]	373	550	750	1100	1500
Current [A]	4.5	6	6.4	11	12
Maximum airflow [m ³ /h]	3250	4250	5600	6000	7000
RPM [min ⁻¹]	1100	1050	890	890	890
Intake flange [mm]	250	2 x 250	2 x 250	2 x 250	3 x 250
Exhaust flange [mm]	250	315	315	315	405
Transported air temperature [°C]	-20 ... +50				
Protection rating	IP42				

Order code:

Fan series	Maximum airflow	Motor modification	Extra options
KSDD	250 500 1000 1500 2500 3250 4250 5600 7000	Q: extra quiet*	R1: 2 m long power cable with EURO-plug

* Q version is equipped with rubber anti-vibration rings and flexible anti-vibration connector

Series
Quietline



Low-noise axial inline fans with air capacity up to 375 m³/h

Technical data:

	Quietline 100			Quietline 125			Quietline 150			Quietline 150 Duo		Quietline 150 Extra	
	single	min	max	single	min	max	single	single	min	max	min	max	
Speed	single	min	max	single	min	max	single	single	min	max	min	max	
Voltage [V/50 (60) Hz]	220-240												
Power [W]	7.5	4.5	7.5	13	10	13	22	26	19	22	22	25	
Current [A]	0.049	0.029	0.049	0.085	0.065	0.085	0.095	0.085	0.087	0.095	0.103	0.109	
Maximum airflow [m ³ /h]	100	75	100	197	155	197	335	305	250	335	285	375	
RPM [min ⁻¹]	2100	1650	2100	2250	1950	2250	2250	1900	1950	2250	2300	2600	
Noise level at 3 m [dBA]	25	22	25	33	29	32	39	37	36	39	36	41	
Max transported air temperature [°C]	40												
Protection rating	IPX4												

Order code:

Fan series	Extra options	Duct diameter	Extra options
Quietline	-k: fixing bracket	100 125 150	Extra: double-speed high-powered motor Duo: single-phase double-speed motor Q: low-noise motor K: backdraft damper for prevention of back airflow R1: 2 m long power cable with EURO-plug

INLINE AXIAL FANS

Series
VKO



Axial inline fans with air capacity up to 298 m³/h

Series
VKO1



Axial inline fans with air capacity up to 305 m³/h

Technical data:

	VKO 100	VKO 125	VKO 150	VKO1 100	VKO1 125	VKO1 150
Voltage [V/50 Hz]	220-240			220-240		
Power [W]	14	16	24	14	16	29
Current [A]	0.085	0.1	0.13	0.085	0.1	0.13
Maximum airflow [m ³ /h]	105	185	298	107	190	305
RPM [min ⁻¹]	2300	2400	2400	2300	2400	2400
Noise level at 3 m [dBA]	37	38	40	36	38	40
Max transported air temperature [°C]	40			40		
Protection rating	IPX4			IPX4		

Order code:

Fan series	Extra options	Duct diameter	Extra options
VKO VKO1	k: fixing bracket	100 125 150	turbo: high-powered motor press: high-pressure 5-blade low-noise impeller

Series
VKOM/VKOMz



Axial inline fans with air capacity up to 1700 m³/h

Technical data:

	VKOM 150 / VKOMz 150	VKOM 200 / VKOMz 200	VKOM 250 / VKOMz 250	VKOM 315 / VKOMz 315
Voltage [V/50 Hz]	1 ~ 230			
Power [W]	36	43	68	110
Current [A]	0.26	0.28	0.48	0.75
Maximum airflow [m ³ /h]	200	405	1070	1700
RPM [min ⁻¹]	1300	1300	1300	1300
Noise level at 3 m [dBA]	33	32	37	42
Max transported air temperature [°C]	40			
Protection rating	IPX4			

Order code:

Fan series	Casing material	Duct diameter
VKOM	_ : steel with polymer coating; z: galvanized steel	150 (ø162 mm)
		200 (ø208 mm)
		250 (ø262 mm)
		315 (ø315 mm)

Series
VKOM1/VKOM1z



Axial inline fans (squeezed flanges) with air capacity up to 1700 m³/h

Technical data:

	VKOM1 150 / VKOM1z 150	VKOM1 200 / VKOM1z 200	VKOM1 250 / VKOM1z 250	VKOM1 315 / VKOM1z 315
Voltage [V/50 Hz]	1 ~ 230			
Power [W]	36	43	68	110
Current [A]	0.26	0.28	0.48	0.75
Maximum airflow [m ³ /h]	200	405	1070	1700
RPM [min ⁻¹]	1300	1300	1300	1300
Noise level at 3 m [dBA]	33	32	37	42
Max transported air temperature [°C]	40			
Protection rating	IPX4			

Order code:

Fan series	Casing material	Duct diameter
VKOM1	_ : steel with polymer coating; z: galvanized steel	150 (ø148 mm)
		200 (ø198 mm)
		250 (ø248 mm)
		315 (ø315 mm)

Series
S



Axial inline fans with air capacity up to 292 m³/h

Technical data:

	S 100	S 125	S 150
Voltage [V/50 (60) Hz]	220-240		
Power [W]	14	16	24
Current [A]	0.085	0.1	0.13
Maximum airflow [m ³ /h]	85	180	292
RPM [min ⁻¹]	2300	2400	2400
Noise level at 3 m [dBA]	34	35	38
Max transported air temperature [°C]	40		
Protection rating	IP34		

Series
PF



Axial inline fans with air capacity up to 292 m³/h

	PF 100	PF 125	PF 150
Voltage [V/50 (60) Hz]	220-240		
Power [W]	14	14	24
Current [A]	0.085	0.1	0.13
Maximum airflow [m ³ /h]	98	185	292
RPM [min ⁻¹]	2300	2400	2300
Noise level at 3 m [dBA]	34	33	34
Max transported air temperature [°C]	40		
Protection rating	IP34		

Order code:

Fan series	Duct diameter	Extra options
S	100 125 150	K: fan is equipped with a backdraft damper for back flow preventing turbo: high-powered motor R1: 2 m long power cable with EURO-plug
PF		

LOW-NOISE & ENERGY-SAVING INLINE AXIAL WALL FANS

Series
Quiet



Low-noise & energy-saving axial inline fans with air capacity up to 370 m³/h

Technical data:

	Quiet 100		Quiet 100 Duo		Quiet 125	Quiet 125 Duo		Quiet 150		Quiet 150 Extra	
	single	min	max	single	min	max	min	max	min	max	
Speed	220-240										
Voltage [V/50 (60) Hz]	220-240										
Power [W]	7.5	4	7.5	17	9.5	13.5	17	19	19	22	
Current [A]	0.049	0.029	0.052	0.11	0.065	0.9	0.08	0.09	0.09	0.1	
Maximum airflow [m ³ /h]	97	60	90	185	145	170	220	315	280	370	
Noise level at 3 m [dBA]	25	22	25	32	28	32	28	33	32	38	
Max transported air temperature [°C]	40										
Protection rating	IP45										

Order code:

Fan series	Duct diameter	Extra options
Quiet	100 125 150	Extra: double-speed high-powered motor Duo: double-speed motor R1: 2 m long power cable with EURO-plug

DUCT NOISE SILENCERS

Series
SR



rigid silencer

Series
SRF



flexible silencer

Series
SRP



flexible silencer

Order code: _____

Series	Duct diameter	Length
SR SRF SRP	100; 125; 150; 160; 200; 250; 315	600; 900; 1200; 2000
	/	500; 600; 750; 900; 1200; 1500; 2000

FLEXIBLE CONNECTORS

Series
VVG



Series
VVGF



Series
VVG (rectangular)



Order code: _____

Series	Duct diameter
VVG	100; 125; 150; 160; 200; 250; 315; 355; 400; 450; 500
VVGF	200; 250; 300; 350; 400; 450; 500; 550; 630
VVG (rectangular)	400x200; 500x250; 500x300; 600x300; 600x350; 700x400; 800x500; 900x500; 1000x500

PANEL FILTER BOXES

Series
FB



filter box with flat filter element

Series
FBV



filter box with V-shaped filter element

Series
FBK



filter box with pocket filter element

Order code: _____

Series	Duct diameter
FB FBV SBK	100; 125; 150; 160; 200; 250; 315
SF SFV SBK	

SF replaceable filter



SFV replaceable filter



SBK replaceable pocket filter



ELECTRIC DUCT HEATERS

Series
NK



electric duct heater

Series
NK ... U/ Un



electric duct heater with built-in temperature controller



electric duct heater with built-in control unit

Order code: _____

Series	Duct diameter	Heater power [kW]	Phase	Options
NK	100; 125; 150; 160; 200; 250; 315	0,6; 0,8; 1,2; 1,6; 1,7; 1,8; 2,0; 2,4; 3,0; 3,4; 3,6; 5,1; 6,0; 9,0	1: single-phase 3: three-phase	U: integrated temperature controller or control unit

Series
CZK



galvanized steel clamps (with microporous rubber layer), wall or ceiling mounting

Series
CZ



galvanized steel clamps (with microporous rubber layer)

Series
CB



stainless steel quick-detachable clamps with a swing screw

Series
C



stainless steel (C series) or galvanized steel (C...Zn) clamps

Series
SU 50



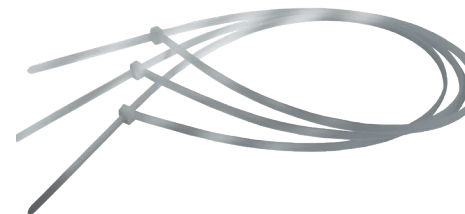
set of locking devices (50 pcs) for CBR 3000

Series
CBR 3000



band clamps (roll 30 m x 9 mm x 0,8 mm)

Series
C ... N



nylon clamps (100 pcs/pack)

Series
NZC



tightening and cutting snips for C...N nylon clamps

Order code:

Series	Duct diameter
CZK CZ C	100; 125; 150; 160; 200; 250; 315
CB	60-110; 60-135; 60-165 60-180
C	370/100; 530/100; 710/100; 780/100; 912/100; 1220/100 N

Series	Model
CBR	3000

Series
Polyvent 605

non-insulated air ducts
aluminium foil laminated with polyether film,
spiral high-carbon steel wire frame



Series
Aluvent N

non-insulated air ducts
semi-flexible spiral seam aluminium band



Series
Polyvent N

non-insulated air ducts
metalized polyester film, spiral high-carbon
steel wire frame



Series
Isovent N

insulated air ducts
metalized polyester film, 25 mm mineral wool layer,
spiral high-carbon steel wire frame



Series
Polyvent 660

non-insulated air ducts
PVC film, spiral high-carbon steel wire frame



Series
Polyvent 665-Comby

non-insulated air ducts
multilayer aluminium foil, polyether and PVC,
high-carbon steel wire frame



Cross-T
KM
steel, polymer coated



Cross-T
KM...Zn
galvanized steel



T-joint
TM
polymer coated steel



T-joint
TM...Zn
galvanized steel



Y-joint
TMY
polymer coated steel



Y-joint
TMY...Zn
galvanized steel



Reducer
RM
polymer coated steel



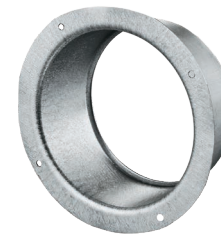
Reducer
RM...Zn
galvanized steel



Flange
FM
polymer coated steel



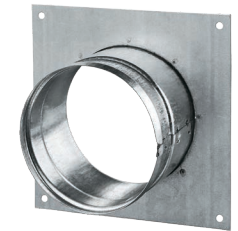
Flange
FM...Zn
galvanized steel



Wall plate flange
FMK
polymer coated steel



Wall plate flange
FMK...Zn
galvanized steel



Connector
PM
polymer coated steel



Connector
PM...Zn
galvanized steel



Diffuser
DVL
polymer coated steel



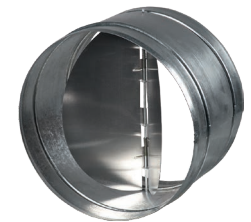
Bend 90°
galvanized steel



Bend 45°
galvanized steel



Backdraft damper
KOM
spring-loaded



T-joint



Reducer



Round step reducer



Eccentric reducer



Bend 90°



Bend 45°



Connector



Connector (backdraft damper)



Flexible duct connector



Wall plate connector (backdraft damper)



Wall plate connector



Wall plate



Duct



Telescopic duct



Duct holder



Flexible duct connector



Wall plate flange



Wall flange with retaining ring



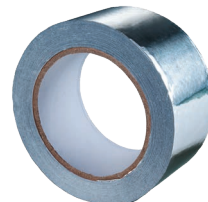
**Supply/exhaust air disk valves
A...VRF**



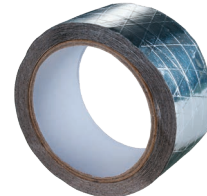
**Exhaust grilles with louver shutters
MV...VJ**



**Aluminium adhesive tape
ALT**







**Reinforced aluminium adhesive tape
ART**










**Adhesive PVC tape
PVT**




Model		Phase	Current	Protection	Casing	Functions
Twin-fan speed controller with electronic thermostat						
RTS-5-U twin-fan speed controller is a temperature depended speed regulator for grow rooms ventilated with one or two fans. For control of exhaust fan or both of exhaust and intake fans installed in a greenhouse. The controller changes the fans' speed (airflow consumption) automatically depending on the air temperature in a greenhouse thus keeping it constant and creating "negative pressure" and ensuring that all the air is exhausted through the carbon filter (preventing odour). Equipped with 4 m long temperature sensor.						
RTS-5-U		single-phase	up to 5,0 A	IP44	Plastic casing for wall surface mounting	Maintaining air temperature in a greenhouse to within 2°C. The speed changeovers are seldom.
RTS-5-U1						Maintaining precise air temperature point in a greenhouse. The speed changeovers are more frequent but at intervals of not less than 5 minutes.
RTS-5-U2						Maintaining air temperature in a greenhouse to within 2°C. The fan's operation is not continuous.
Thyristor speed controllers						
RS-1-300		single-phase	up to 1.5 A	IP40	Plastic casing for wall flush mounting	Switching ON/OFF and smooth speed control of single-phase voltage controlled motors.
RS-1-400			up to 1.8 A	IP40		
RS-1 N (V)		single-phase	up to 1.0 A	IP44	Plastic casing for wall flush (V) or surface (N) mounting	Switching ON/OFF and smooth speed control of single-phase voltage controlled motors.
RS-1,5 N (V)			up to 1.5 A			
RS-2 N (V)			up to 2.0 A			
RS-2,5 N (V)			up to 2.5 A			
RS-0,5-PS		single-phase	0.1 – 0.5 A	IP44	Plastic casing for wall flush or surface mounting	Switching ON/OFF and smooth speed control of single-phase voltage controlled motors.
RS-1,5-PS			0.15 – 1.5 A			
RS-2,5-PS			0.25 – 2.5 A			
RS-4,0-PS			0.4 – 4.0 A			
RS-3,0-T		single-phase	0.3 – 3.0 A	IP54	Plastic casing for wall surface mounting	Switching ON/OFF and smooth speed control of single-phase voltage controlled motors. Output power is controlled from 25 to 100% as a function of control knob position.
RS-5,0-T			0.5 – 5.0 A			
RS-10,0-T			1.0 – 10.0 A			
RS-3,0-TA		single-phase	0.3 – 3.0 A	IP54	Plastic casing for wall surface mounting	Switching ON/OFF and smooth speed control of single-phase voltage controlled motors. Output power is controlled from 25 to 100% with a control signal 0...10 V or 4-20mA in the selected control range.
RS-6,0-TA			0.5 – 6.0 A			
RS-10,0-TA			1.0 – 10.0 A			

Model		Phase	Current	Protection	Casing	Functions
Transformer speed controllers						
RSA5E-2-P		single-phase	up to 2.0 A	IP54	Plastic casing for wall surface mounting	Step fan speed control. Overheating motor protection, connection of thermostat and air damper actuator. Mechanical speed changeover.
RSA5E-2-M		single-phase	up to 2.0 A	IP21	Metal casing for wall surface mounting	Step fan speed control. Overheating motor protection, connection of thermostat and air damper actuator. Mechanical speed changeover.
RSA5E-3-M			up to 3.0 A			
RSA5E-4-M			up to 4.0 A			
RSA5E-10-M			up to 10.0 A	IP54		
RSA5E-13-M			up to 13.0 A			
RSA5E-1,5-T		single-phase	up to 1.5 A	IP54	Plastic casing for wall surface mounting	Step fan speed control. Overheating motor protection, connection of thermostat and air damper actuator. Mechanical speed changeover.
RSA5E-3,5-T			up to 3.5 A			
RSA5E-5,0-T			up to 5.0 A			
RSA5E-7,5-T			up to 7.5 A			
RSA5D-1,5-M		three-phase	up to 1.5 A	IP54	Metal casing for wall surface mounting	Step fan speed control. Overheating motor protection, connection of thermostat and air damper actuator. Mechanical speed changeover.
RSA5D-2,5-M			up to 2.5 A			
RSA5D-6,0-M			up to 6.0 A			
RSA5D-8,0-M			up to 8.0 A			
RSA5D-11,0-M			up to 11.0 A			
RSA5D-12,0-M			up to 12.0 A	IP44		

Model		Phase	Current	Protection	Casing	Functions
Room thermostats						
TST-1-300		single-phase	up to 1 (0.6 A)	IP40	Plastic casing for wall surface mounting	Temperature control in ventilation, heating and air conditioning systems. Equipped with a highlighted sensor display. Automatic heating/cooling rate control.
TSTD-1-300						
Temperature controllers						
RTS -1-400		single-phase	up to 2.0 A	IP40	Plastic casing for wall flush mounting	Temperature control in ventilation, air conditioning and heating systems. Equipped with digital LED display. Automatic heating/cooling rate control.
RTSD -1-400						
RT-10		single-phase	up to 10.0 A	IP40	Plastic casing for wall surface mounting	Room temperature control and control of ventilation, heating and air conditioning systems. Temperature control range from +10 up to +30°C.

Model		Phase	Current	Protection	Casing	Functions
Speed control switches						
P2-1-300		single-phase	up to 3.0 A	IP40	Plastic casing for wall flush mounting	2 speed step switching
P3-1-300						3 speed step switching
P2-5,0 N (V)		single-phase	up to 5.0 A	IP40	Plastic casing for wall surface and flush mounting	2 speed step switching
P3-5,0 N (V)						3 speed step switching
P5-5,0 N (V)						5 speed step switching
EC motors speed controller						
R-1/010		single-phase	up to 5.0 mA	IP40	Plastic casing for wall flush mounting	Smooth control of speed, temperature and other parameters. 0-10V output is equipped with max. 3A built-in switch.
Sensors						
T-1,5N		single-phase	up to 1.5 A	IP54	Plastic casing for wall surface mounting	Fan operation with turn-off delay.
TH-1,5N						Humidity-controlled fan operation.
TF-1,5N						Light-controlled fan operation with turn-off delay.
TP-1,5N						Motion controlled operation of the fan with turn-off delay.

Model		Phase	Current	Protection	Casing	Functions
Humidity sensor						
DPWC11200		single-phase	up to 20.0 mA	IP30	Plastic casing for wall surface mounting	Humidity control in ventilation, air conditioning and heating systems.
Electro-mechanical humidistat						
HR-S		single-phase	up to 5.0 A	IP30	Plastic casing for wall surface mounting	Humidity control and/or dehumidification in ventilation, air conditioning and heating systems. Can also be used to alarm when the humidity exceeds or falls below a pre-set level.
CO₂ sensors						
CO2-1		single-phase	up to 2.0 A	IP54	Plastic casing for wall surface mounting	Indoor carbon dioxide concentration measurement and respective air capacity regulation through the control output signal to the fan.
CO2-2		single-phase	up to 2.0 A	IP54	Plastic casing for wall surface mounting	Indoor carbon dioxide concentration measurement and respective air capacity regulation through the control output signal to the fan.
TRF-220/24-1,6		single-phase	up to 1.6 A	IP54	Plastic casing	Power supply unit for connection of CO2-1 or CO2-2 sensor to 220 V AC power mains.
Electric TRIAC temperature controller						
PULSER-M		single- or two-phase	up to 16.0 A	IP20	Plastic casing for wall surface mounting	Controls electric heaters power output. Controller design allows connecting to single or two phase heater.

Model		Phase	Current	Protection	Casing	Functions
TRIAC power controller for electric heaters						
RNS-16		single- or three-phase	up to 25.0 A	IP54	Flame-retardant thermoplastic casing for surface mounting	Controls power output of electric heaters with load current rating up to 120 A.
RNS-25			up to 120.0 A			
Duct temperature sensors						
KDT-M/KDT-M1		Temperature range: -30...+80 °C Voltage: ≤5V DC Sensor length: 100/150/200/400 mm Cable length: 2.5 m		IP54	Sensing element, NTC thermometer resistor enclosed in aluminium sleeve	For installation in the air duct and temperature measurement of airflow in ventilation and air conditioning systems.
KDT2-M/KDT2-M1		Temperature range: -30...+80 °C Voltage: 2.7...10V Sensor length: 100/150/200/400 mm Cable length: 2.5 m			Integrated circuit chip located inside the plastic casing	
KDT-MK		Temperature range: -30...+60 °C Voltage: ≤5V DC Sensor length: 100/150/200/400 mm		IP54	Sensing element, NTC thermometer resistor enclosed in aluminium sleeve	For installation into air duct and measuring of air temperature in ventilation and air conditioning systems.
KDT2-MK		Temperature range: -30...+60 °C Voltage: 2.7...10V Sensor length: 100/150/200/400 mm			Integrated circuit chip located inside the plastic casing	
NDT		Temperature range: -30...+60 °C Voltage: ≤5V DC		IP54	Sensing element, NTC thermometer resistor, enclosed in plastic casing	For outdoor temperature measurement in ventilation and air conditioning systems.
NDT2		Temperature range: -40...+60 °C Voltage: 4...10V			Integrated circuit chip located inside the plastic casing	
TG-K300		Temperature range: -30...+30 °C		IP54	Linearized NTC sensor	For installation into air duct and temperature measurement of airflow in ventilation and air conditioning systems. Used jointly with PULSER-M electric TRIAC temperature controllers. Sensor length: 15...145 mm. Cable length: 1.5 m
TG-K330		Temperature range: 0...+30 °C				
TG-K350		Temperature range: +20...+50 °C				
TG-K360		Temperature range: 0...+60 °C				

VENTS reserves the rights to modify any of its products' features, designs, components and specifications at any time and without notice to maintain the development and quality of manufactured goods.



WORLD VENTILATION LEADER

VENTILATION SYSTEMS
www.ventilation-system.com

hydroponics & indoor gardening ventilation